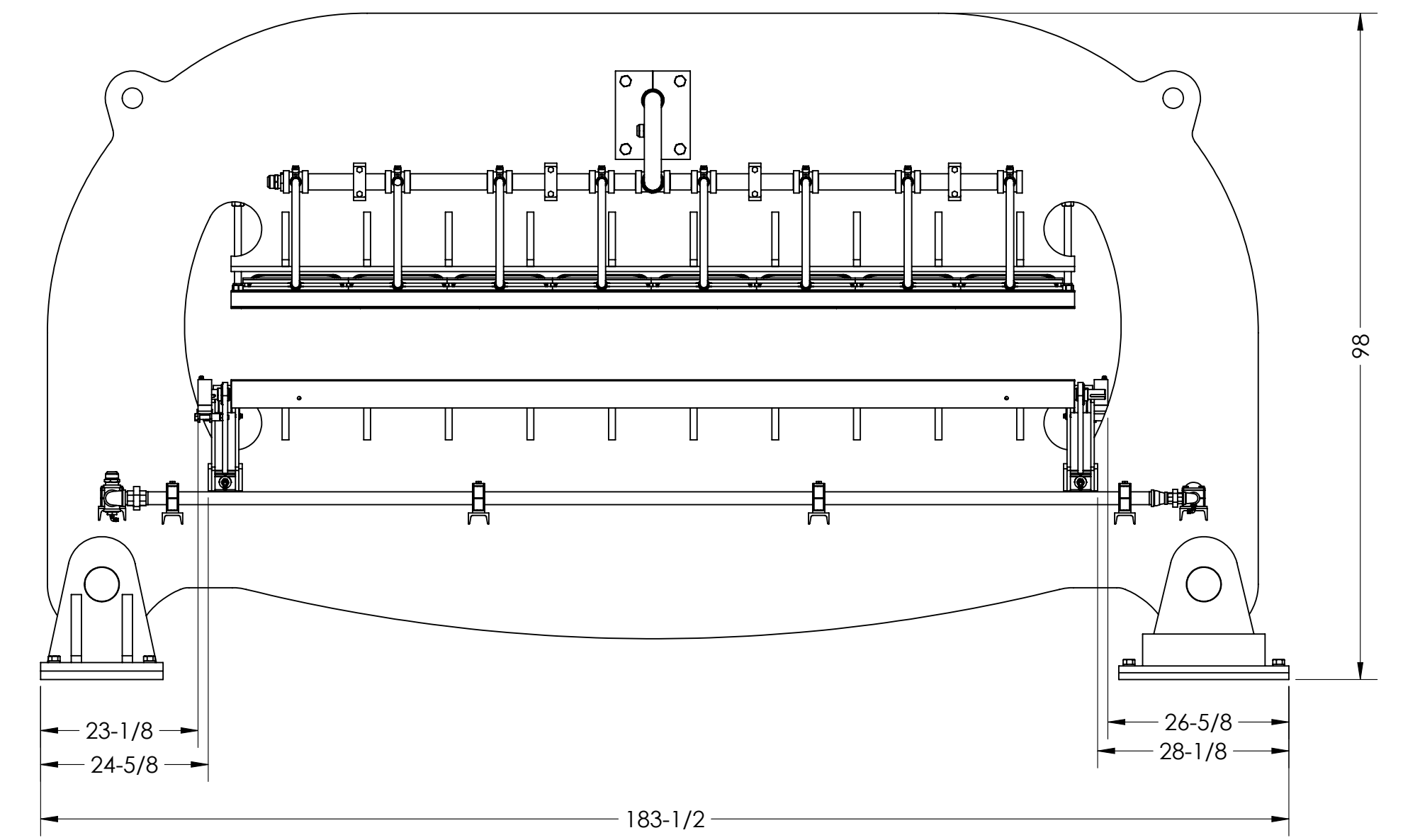
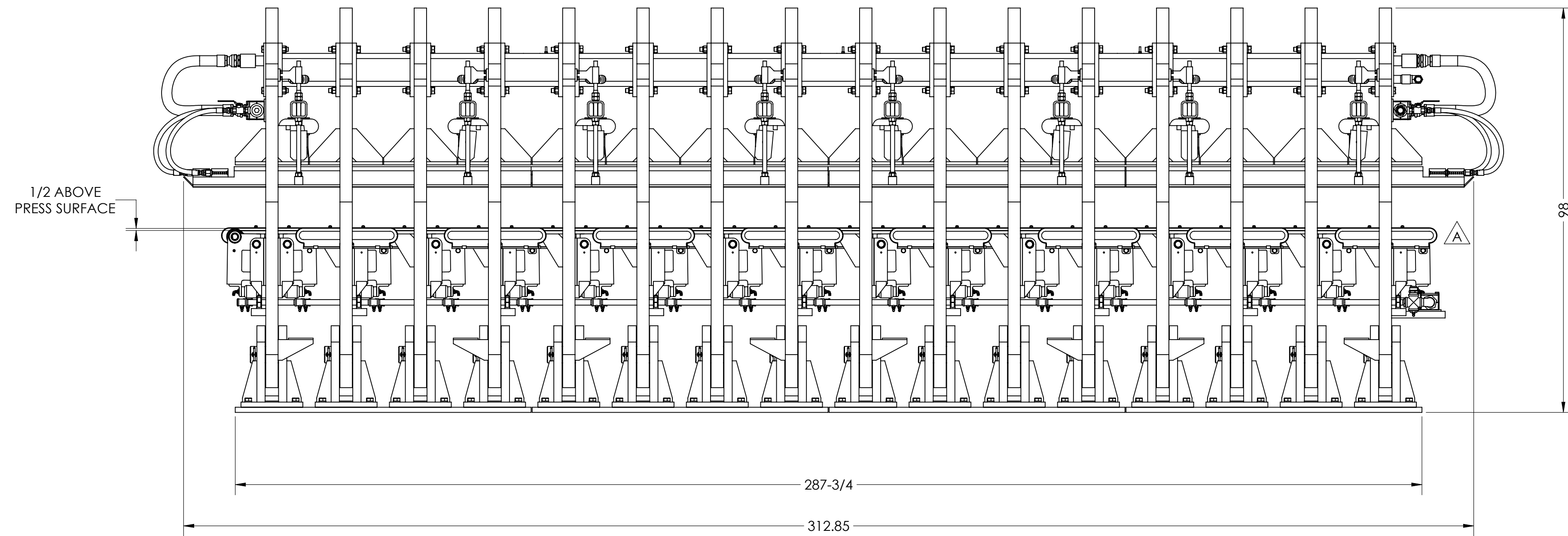
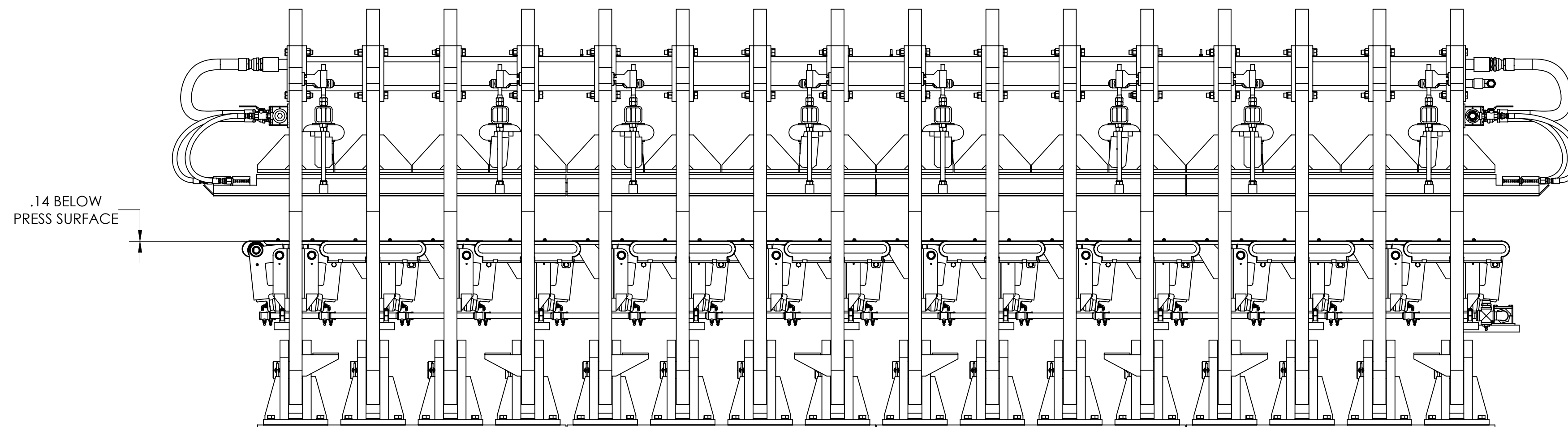


ITEM	Default/ QTY.	DESCRIPTION	LG/AR	UOM	DWG - P/N
1	1	CLT PRESS FRAMES		EA	6101-002-A
2	1	JUMP ROLL ASSY		EA	429050
3	1	AIR SCHEMATIC		EA	6101-002-AS

ROLLS RAISED

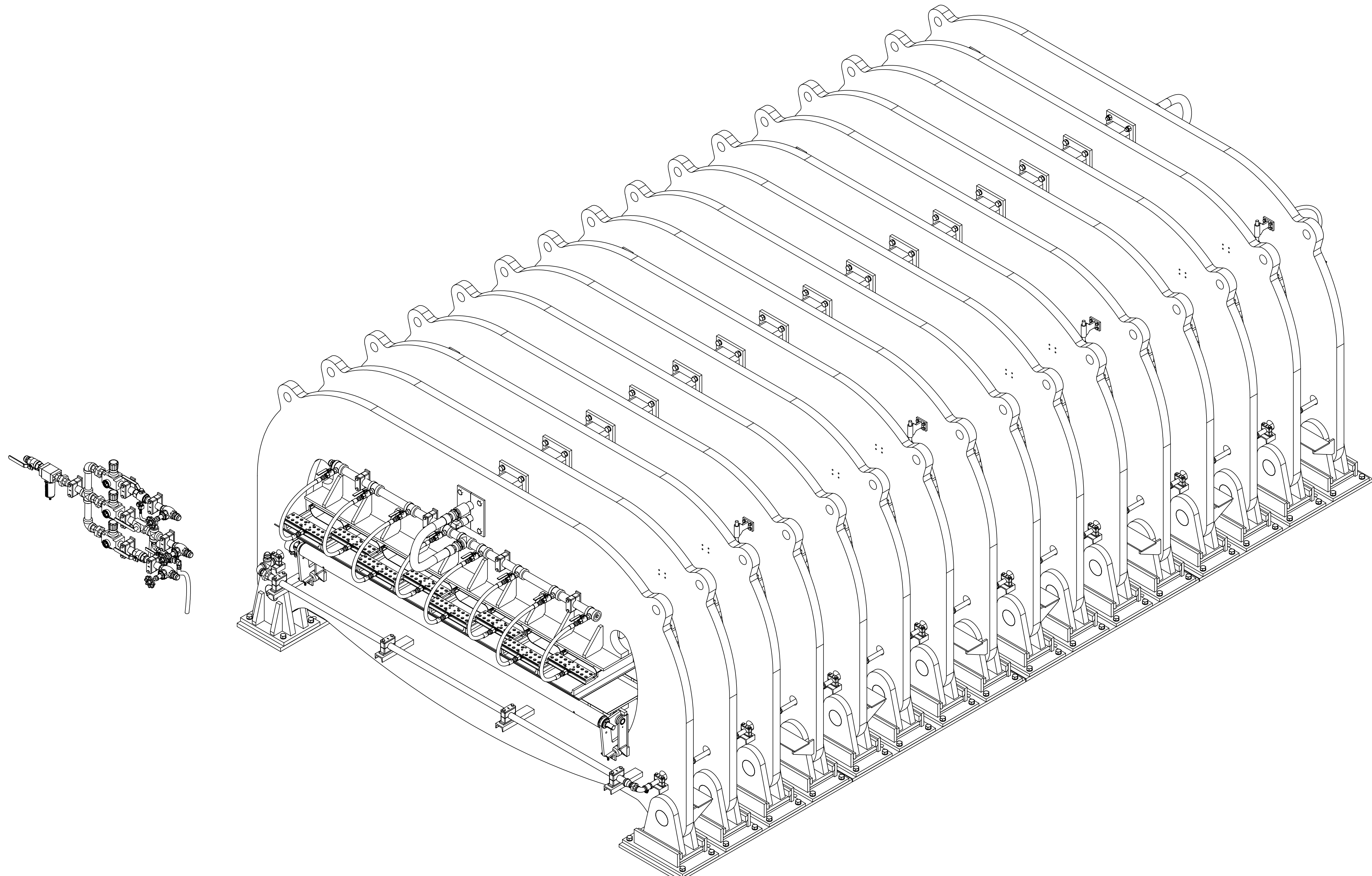


ROLLS LOWERED



SEE SHEET 2 FOR ISOMETRIC VIEW

JOB	WO	QTY
		
<small>© U.S. NATURAL RESOURCES, INC. - THE INFORMATION CONTAINED IN THIS DRAWING IS THE SOLE PROPERTY OF U.S. NATURAL RESOURCES, INC. ANY REPRODUCTION IN PART OR WHOLE WITHOUT THE WRITTEN PERMISSION OF U.S. NATURAL RESOURCES, INC. IS PROHIBITED.</small>		
		
800 BUY USNR WWW.USNR.COM		
CLT PRESS		
<small> TOLERANCES UNLESS OTHERWISE NOTED: 1. ALL DIMENSIONS ARE IN INCHES 2. FRACTIONAL 1/16" 3. DECIMAL .000 1/32" 4. DECIMAL .0000 1/64" 5. DECIMAL .00000 1/1000" 6. ANGLES 1° 7. ANGLE 0° 45' 20" 15' 8. BREAK ALL SHARP EDGES 9. DO NOT SCALE DRAWINGS 10. TOLERANCES FOR THE OVERALL DIMENSIONS ARE NOT CUMULATIVE </small>		
<small> B AIR ASSEMBLY ADDED 11/2015 LHM A ROLL ASSEMBLY CHANGED FROM STAND ALONE TO FRAME MOUNTED 11/16/2014 LHM REV DESCRIPTION DATE BY </small>	<small> DRAWN BY L.MEEKER CHECKED BY REF DWG SCALE 1:20 </small>	<small> DATE 10/24/2014 SCALE </small>
<small> MODEL NAME: 6101-002 CLT PRESS WITH ROLL CASE SHEET 1 OF 2 Dwg No: 6101-002 </small>	<small> REV B </small>	



JOB	WO	QTY
© U.S. NATURAL RESOURCES, INC. - THE INFORMATION CONTAINED IN THIS DRAWING IS THE SOLE PROPERTY OF U.S. NATURAL RESOURCES, INC. ANY REPRODUCTION IN PART OR WHOLE WITHOUT THE WRITTEN PERMISSION OF U.S. NATURAL RESOURCES, INC. IS PROHIBITED.		
USNR 800 BUY USNR WWW.USNR.COM		CLT PRESS INTEGRATED WITH ROLLCASE
TOLERANCES UNLESS OTHERWISE NOTED:		
1. ALL DIMENSIONS ARE IN INCHES		
2. FRACTIONAL	1/16"	
3. DECIMAL 0.00	±.005	
4. DECIMAL 0.000	±.002	
5. DECIMAL 0.0000	±.0010"	
6. ANGLES	±1°	
7. ANGLE 0°	±20' 15"	
8. BREAK ALL SHARP EDGES		
9. DO NOT SCALE DRAWINGS		
10. TOLERANCES FOR THE OVERALL DIMENSIONS ARE NOT CUMULATIVE		
DRAWN BY	L.MEEKER	DATE
CHECKED BY		SCALE
REF DWG		SCALE
		1:16
MODEL NAME	6101-002 CLT PRESS WITH ROLLCASE	REV
FIELD	Y	2 OF 2
DATE	10/24/2014	SCALE
REV	D	6101-002
		B