



**BIG ENOUGH FOR
THE INDUSTRY LEADERS,
YET PERSONAL ENOUGH
FOR AMERICA'S FARMER.**

AMERICA'S AUCTION COMPANY

HOUSTON, TEXAS

PART 1

****TIMED AUCTION****

OPENS: WEDNESDAY, AUGUST 10TH AT 12:00 PM

CLOSES: WEDNESDAY, AUGUST 17TH AT 12:00 PM

LARGE QUANTITY OF SUPPORT EQUIPMENT, GENERATORS, WATER PUMPS, WELDERS, TRENCH BOXES, SHORING, ATTACHMENTS AND MORE

PART 2

****ONSITE LIVE AUCTION****

THURSDAY, AUGUST 18TH AT 9:00 AM

PRIMARILY CAT LATE MODEL CONSTRUCTION, PAVING EQUIPMENT, CASE & IH AGRICULTURAL TRACTORS & IMPLEMENTS, TRUCK TRACTORS, DUMP TRAILERS, ALL TYPES OF SUPPORT TRUCKS

BANKRUPTCY SALE BURNSIDE SERVICES, INC - VERY LARGE 1 OWNER SALE

IN CONJUNCTION WITH PPL AUCTIONS AND PLANT & MACHINERY INC.



ALEX LYON & SON SALES MANAGERS & AUCTIONEERS, INC.

2022

7697 ROUTE 31, PO BOX 610, BRIDGEPORT, NY 13030 315-633-2944 FAX: 315-633-8010 LYONAUCTION.COM

****TIMED and ONSITE-LIVE AUCTION****

Please feel free to preview any of our Live or Timed Auction sale sites 5 days before auction day!

HOUSTON, TEXAS - PART 1 - **TIMED AUCTION**

OPENS: WEDNESDAY, AUGUST 10TH AT 12:00 PM - CLOSES: WEDNESDAY, AUGUST 17TH AT 12:00 PM

ADDRESS: 711 Rankin Road, Houston, Texas 77073. **NOTE:** Equipment will be selling under the Federal Bankruptcy Law. The equipment found here is in excellent condition and is ready to go to work immediately. **SALE SITE PHONE:** (936) 346-1795 Ernest. **TEXAS LICENSE:** #15791 Jack Lyon. **TERMS & CONDITIONS:** **UPDATE:** Cash payment will only be accepted on sale day. After sale day, all items must be paid for by Certified Check, Wire Transfer, or Credit Card. "Certified Check" made payable to Alex Lyon & Son. Everything Sells "AS IS, WHERE IS." The following charges will apply on all purchases: a 5% administration fee will be assessed when paying with cash or good check. (The standard fee of 8% will be assessed when paying with credit card). ****Please NOTE: An additional fee may be assessed when bidding online**** The Bidder is responsible for knowing which item he/she is bidding on. If he/she is unsure, he/she should inquire or not bid. When you become the winning bidder at auction you have effected a contract and will be expected to pay for items in which you were evidenced to be the successful bidder. Auctioneer will not honor "mistakes".



FOR BID ONLINE TECHNICAL ASSISTANCE CALL
Proxibid: (855) 636-6461
Nextlot: (919) 361-1111

AIRPLANE

1970 CESSNA 414 N1234W. This plane has 9984.4 TT. This plane was seized by law enforcement. An inspection was done in May 2022 and the plane is not airworthy. Selling offsite located: 3300 Rickabaugh Dr, Big Spring, TX 79720. Call to set up an appointment for preview: Jimmy, 614-989-3216.

18 EXCAVATOR BUCKETS

CAT 84IN. DIGGING BUCKET
CAT 66IN. DIGGING BUCKET
CAT 36IN. DIGGING BUCKET for Cat 335.
CAT 30IN. DIGGING BUCKET for Cat 336.
CAT 24IN. DIGGING BUCKET for Cat 336.
CAT 24IN. DIGGING BUCKET for Cat 320.
CAT 24IN. DIGGING BUCKET
ROCKLAND 84IN. DIGGING BUCKET for Cat 349.
ROCKLAND 24IN. DIGGING BUCKET for Cat 320.
ROCKLAND 24IN. DIGGING BUCKET for Cat 336.
2017 XCMG 36IN. DIGGING BUCKET
 SN:D360176012HJ087
2017 XCMG 36IN. DIGGING BUCKET
 SN:D360176002HJ087
2016 XCMG 36IN. DIGGING BUCKET
 SN:D360166006HJ087
2019 XCMG 24IN. DIGGING BUCKET
 SN:D0210C3190055GR050
SKELETON BUCKET 58IN. SKELETON BUCKET
2019 TAG 24IN. DIGGING BUCKET SN:288334-06
ENTEK 24IN. DIGGING BUCKET for Cat 330D.
24IN. DIGGING BUCKET

RUBBER TIRED LOADER ATTACHMENT

PALLET OF CUTTING EDGES

LIFT ATTACHMENT

2011 JLG GLASIER TRAY SN:2011-200-01

4 WELDERS

2017 LINCOLN VANTAGE 300 SN:U1170304737
 powered by diesel engine, equipped with 300AMPS, trailer mounted.
2016 LINCOLN VANTAGE 300 SN:U1170101065
 powered by diesel engine, equipped with 300AMPS, trailer mounted.
2016 LINCOLN RANGER 305D SN:U1160106883
 powered by diesel engine, equipped with 300AMPS, trailer mounted.
MILLER INVISION 456MP DC INVERTER ARC

5 LIGHT PLANTS

ALLMAND MAXI-LITE II SN:0388ML2V15 powered by Cat diesel engine, equipped with 4-1,250 watt lightbulbs, 8KW, ST175/80R13 tires, trailer mounted.
ALLMAND MAXI-LITE V SERIES SN:0399MLZV15
 powered by Cat diesel engine, equipped with 4-1,250 watt lightbulbs, 8KW, ST175/80R13 tires, trailer mounted.
ALLMAND MAXI-LITE V SERIES SN:0661MLV13
 powered by Kubota diesel engine, equipped with 4-1,250 watt lightbulbs, 6KW, ST225/75R15 tires, trailer mounted, 1,237 hours.
ALLMAND NIGHT LITE PRO III powered by Kubota diesel engine, equipped with 4-1,000 watt lightbulbs, 6KW, trailer mounted.
MAGNUM SN:408134 Parts.

ARROW/MESSAGE BOARD

DISPLAY SOLUTIONS SUNRAY TRAFFIC CONTROLLER
 SN:1189 equipped with ST205/75D15 tires, single axle.

WATER PUMP

PIONEER powered by John Deere diesel engine, equipped with tandem axle, parts unit.

7 UTILITY VEHICLES

2016 KUBOTA RTV-X1140W-H SN:11027 4x4, powered by diesel engine, equipped with OROPS, 4-seater, utility body.
2016 KUBOTA RTV-X900W-H SN:30010 4x4, powered by diesel engine, equipped with OROPS, 2-seater, utility body.
2014 KUBOTA RTV-X900W-H SN:18624 4x4, powered by diesel engine, equipped with OROPS, 2-seater, utility body.

2014 KUBOTA RTV400CI-H SN:19916 4x4, powered by gas engine, equipped with OROPS, 2-seater, utility body.



JOHN DEERE 2030 PRO GATOR VN:035399 powered by diesel engine, equipped with ROPS, 5 speed manual transmission, hydraulic dump bed.



JOHN DEERE 2030 PRO GATOR VN:020125 powered by diesel engine, equipped with ROPS, 5 speed manual transmission, hydraulic dump bed.

JOHN DEERE 825IS4 powered by gas engine, equipped with OROPS, power steering, 4-seater, utility body, 1,703 hours.

UTILITY VEHICLE ATTACHMENT

SPRAYER equipped with 100 gallon tank, pump, 19ft. spray boom, for ATV utility box.

8 CONTAINERS

(8) 20FT.

8 TRENCH BOXES

10FT. X 24FT.
 (2) 10FT. X 20FT.
 10FT. X 10FT.
 8FT. X 24FT.
 (2) 8FT. X 20FT.
 8FT. X 10FT.

3 ROAD PLATES

(2) 22FT. X 9FT. X 1IN.
 9FT. X 9FT. X 1IN.

LOADING RAMP

LEDWELL 25 TON single axle.

4 FUEL TANKS

WEATHER GUARD 90 GALLON
 (2) WEATHER GUARD L-SHAPE
 LUND L-SHAPE

10 PRESSURE WASHERS

(3) NEW EASY KLEEN MAGNUM GOLD powered by gas engine, equipped with 4000PSI, 12Volt, 15hp, Hot Water, totally self contained.

NEW DEWALT 61147 3300PSI powered by Dewalt 208cc gas engine, equipped with 2.4 GPM, 10in. premium pneumatic tires.

NEW DEWALT 61147 3300PSI powered by Dewalt 208cc gas engine, equipped with 2.4 GPM, 10in. premium pneumatic tires.

(2) NEW SIMPSON 208CC MEGASHOT MS61043 3000PSI powered by gas engine, wheel kit.

2020 MITM CW-3004-4MGH SN:11184285 powered by gas engine.

2018 MITM CWC-5004-4MAH poered by gas engine.

2018 MITM HSP-3504-3MGH powered by diesel engine.

3 NEW SUPPORT EQUIPMENT

NEW KONSTANT KTMD300CLD powered by self propelled gas engine(EPA and CARB Approved Engine), 6.5hp, equipped with 3-speed transmission w/ reverse, manual dump, all terrain drive, rubber tracks, Solid Steel Construction, Removable Sides Converts to Flatbed, Loading Capacity 660 Lbs.

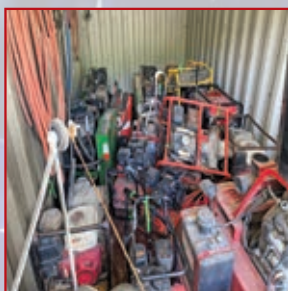
NEW KONSTANT KTMD250C 4x4, powered gas engine(EPA and CARB Approved Engine), 5.5hp, equipped with 4-speed transmission w/ reverse, self propelled, chain drive, solid steel, pneumatic rough terrain tires, 550lb Capacity.

NEW KONSTANT KTC-60 PLATE COMPACTOR powered by gas engine.

OVER 500 LOTS,

Sample Includes: Water Pumps, Air Compressors, Concrete Equipment, Hand Tools, Discharge Hoses, Light Plants, Trench Boxes, Road Plates, Sod Cutters, Lawn Mowers, New Cat Parts, Qty of Plastic Pipe, and so much more!

PLEASE REFER TO LYONAUCTION.COM for an updated list.



****ONSITE-LIVE AUCTION****

Please feel free to preview any of our Live or Timed Auction sale sites 5 days before auction day!

PART 2 - HOUSTON, TEXAS - THURSDAY, AUGUST 18TH AT 9:00 AM

ADDRESS: 711 Rankin Road, Houston, Texas 77073. **NOTE:** Equipment will be selling under the Federal Bankruptcy Law. The equipment found here is in excellent condition and is ready to go to work immediately. **SALE SITE PHONE:** (936) 346-1795 Ernest. **TEXAS LICENSE:** #15791 Jack Lyon. **TERMS & CONDITIONS:** UPDATE: Cash payment will only be accepted on sale day. After sale day, all items must be paid for by Certified Check, Wire Transfer, or Credit Card. "Certified Check" made payable to Alex Lyon & Son. Everything Sells "AS IS, WHERE IS." The following charges will apply on all purchases: a 5% administration fee will be assessed when paying with cash or good check. (The standard fee of 8% will be assessed when paying with credit card). ****Please NOTE: An additional fee may be assessed when bidding online**** The Bidder is responsible for knowing which item he/she is bidding on. If he/she is unsure, he/she should inquire or not bid. When you become the winning bidder at auction you have effected a contract and will be expected to pay for items in which you were evidenced to be the successful bidder. Auctioneer will not honor "mistakes".



FOR BID ONLINE TECHNICAL ASSISTANCE CALL
Proxibid: (855) 636-6461
Nextlot: (919) 361-1111

10 ARTICULATED HAUL TRUCKS

2018 CAT 745 SN:3T600901 6x6, powered by Cat diesel engine, equipped with Cab, air, heat, 45 ton capacity, 875/65R29 rubber.

2018 CAT 745 SN:3T600374 6x6, powered by Cat diesel engine, equipped with Cab, air, heat, 45 ton capacity, 875/65R29 rubber.



2017 CAT 745C SN:TFK01475 6x6, powered by Cat diesel engine, equipped with Cab, air, heat, 45 ton capacity, 875/65R29 rubber.



2017 CAT 745C SN:TFK01486 6x6, powered by Cat diesel engine, equipped with Cab, air, heat, 45 ton capacity, 875/65R29 rubber.

2017 CAT 745C SN:TFK01567 6x6, powered by Cat diesel engine, equipped with Cab, air, heat, 45 ton capacity, 875/65R29 rubber.

2015 CAT 745C SN:TFK00314 6x6, powered by Cat diesel engine, equipped with Cab, air, heat, 45 ton capacity, 29.5R25 rubber.

CAT 745 SN:3T60089 6x6, powered by Cat diesel engine, equipped with Cab, air, heat, 45 ton capacity, 875/65R29 rubber.



2015 CAT 740B SN:T4R03053 6x6, powered by Cat diesel engine, equipped with Cab, air, heat, 40 ton capacity, 29.5R25 rubber.



2015 CAT 740B SN:T4R03051 6x6, powered by Cat diesel engine, equipped with Cab, air, heat, 40 ton capacity, 29.5R25 rubber.

2014 CAT 740B SN:T4R02627 6x6, powered by Cat diesel engine, equipped with Cab, air, heat, 40 ton capacity, 29.5R25 rubber.

WATER TANKER

2012 CAT 740B SN:T4R00624 6x6, powered by Cat diesel engine, equipped with Cab, air, heat, Niece N6000 gallon water tank, side sprayers, rear sprayers, 29.5R25 rubber.

30 HYDRAULIC EXCAVATORS

2018 CAT 374FL SN:EBF20017 powered by Cat diesel engine, equipped with Cab, air, heat, reach boom, 13ft 7in stick, 36in. Pads, Cat hydraulic quick coupler, 96in. Digging bucket, long undercarriage, 2,828 idling hours, 5,636 total hours.



2015 CAT 374FL SN:DNM00271 powered by Cat diesel engine, equipped with Cab, air, heat, 36in. Pads, quick coupler, 96in. Digging bucket, long undercarriage.

2019 CAT 349FL SN:HPD20535 powered by Cat diesel engine, equipped with Cab, air, heat, 35.6in. Pads, quick coupler, 84in. Digging bucket, long undercarriage.

2018 CAT 349FL SN:HPD20228 powered by Cat diesel engine, equipped with Cab, air, heat, 35.6in. Pads, 80in. Digging bucket, long undercarriage.

2018 CAT 349FL SN:HPD20288 powered by Cat diesel engine, equipped with Cab, air, heat, 35.6in. Pads, 80in. Digging bucket, long undercarriage.

2017 CAT 349FL SN:HPD10182 powered by Cat diesel engine, equipped with Cab, air, heat, 35.6in. Pads, quick coupler, 80in. Digging bucket, long undercarriage.

2017 CAT 349FL SN:HPD10194 powered by Cat diesel engine, equipped with Cab, air, heat, 35.6in. Pads, quick coupler, 52in. Digging bucket, long undercarriage.



2016 CAT 349FL SN:CBZ200618 powered by Cat diesel engine, equipped with Cab, air, heat, auxiliary hydraulics, 30in. Pads, quick coupler, 84in. Digging bucket, long undercarriage.



2016 CAT 349FL SN:ABZ200581 powered by Cat diesel engine, equipped with Cab, air, heat, auxiliary hydraulics, 30in. Pads, quick coupler, 52in. Digging bucket, long undercarriage.



2016 CAT 349FL SN:HPD00821 powered by Cat diesel engine, equipped with Cab, air, heat, quick coupler, 72in. Digging bucket, long undercarriage.

2015 CAT 349FL SN:HP800258 powered by Cat diesel engine, equipped with Cab, air, heat, 35.6in. Pads, 80in. Digging bucket, long undercarriage.

2014 CAT 349FL SN:HPD208288 powered by Cat diesel engine, equipped with Cab, air, heat, 35.6in. Pads, 80in. Digging bucket, long undercarriage.

CAT 349FL SN:TLG00847 powered by Cat diesel engine, equipped with Cab, air, heat, 35.6in. Pads, 80in. Digging bucket, long undercarriage.

CAT 349FL SN:797 powered by Cat diesel engine, equipped with Cab, air, heat, 35.6in. Pads, 80in. Digging bucket, long undercarriage.



2018 CAT 336FL SN:TZA20114 powered by Cat diesel engine, equipped with Cab, air, heat, 28in. Pads, quick coupler, 60in. Digging bucket, long undercarriage.



2018 CAT 336FL SN:RKB20926 powered by Cat diesel engine, equipped with Cab, air, heat, 33.6in. Pads, quick coupler, 58in. Digging bucket, long undercarriage.

2017 CAT 336FL SN:RKB10272 powered by Cat diesel engine, equipped with Cab, air, heat, 33.6in. Pads, quick coupler, long undercarriage.

2016 CAT 336EL SN:BZY01983 powered by diesel engine, equipped with Cab, air, heat, 33.6in. Pads, quick coupler, 64in. Digging bucket, long undercarriage, 1,123 hours.



2013 CAT 336ELH SN:RZA00194 powered by Cat diesel engine, equipped with Cab, air, heat, 33.6in. Pads, 64in. Digging bucket, long undercarriage.

CAT 336L SN:FJH00820 powered by Cat diesel engine, equipped with Cab, air, heat, 52in. Digging bucket, long undercarriage.



2015 CAT 326FL SN:WGL00271 powered by Cat diesel engine, equipped with Cab, air, heat, 48in. Digging bucket, long undercarriage.

2018 CAT 323 SN:RAZ00818 powered by diesel engine, equipped with Cab, air, rear & side view cameras, 31in. Pads, digging bucket.

2014 CAT 320ELRR SN:1030 powered by Cat diesel engine, equipped with Cab, air, heat, 31in. Pads, quick coupler, 48in. Digging bucket, long undercarriage.



2013 CAT 320ELRR SN:TFX00583 powered by Cat diesel engine, equipped with Cab, air, heat, 31in. Pads, 36in. Digging bucket, long undercarriage.



2012 CAT 320ELRR SN:TFX00326 powered by Cat diesel engine, equipped with Cab, air, heat, reduced tail swing, 31in. Pads, 34in. Digging bucket w/ thumb, long undercarriage.

2012 CAT 320EL SN:WBK01075 powered by Cat diesel engine, equipped with Cab, air, heat, 31in. Pads, quick coupler, 48in. Digging bucket, long undercarriage.



2020 CAT 302.7D SN:LJ701931 powered by diesel engine, equipped with OROPS, front blade, auxiliary hydraulics, rubber tracks, 18in. Digging bucket, 1,663 hours. Premier warranty expiring 08/21/2022.



2017 CAT 301.7D SN:TLJ400437 powered by Cat diesel engine, equipped with OROPS, front blade, auxiliary hydraulics, 9in. Rubber tracks, 18in. Digging bucket, 3,697 hours.

2017 JOHN DEERE 350GLC SN:812141 powered by John Deere diesel engine, equipped with Cab, air, heat, auxiliary hydraulics, 31.5in. Pads, quick coupler, 48in. Digging bucket, long undercarriage.

2013 KUBOTA KX91RIAS2 SN:42425 powered by Kubota diesel engine, equipped with Cab, air, heat, front blade, digging bucket.

3 HYDRAULIC HAMMERS



NEW TROJAN 50mm pins fits to: Cat 305, 305.5, Komatsu PC45/50/55, Hyundai R55, Hitachi/Deere 50D/G, Case, New Holland, Kobelco SK50, Bobcat E50/341/337.

NEW TROJAN 35mm pin fits to: Cat 303, 303.5, 304, Case, New Holland, Kobelco SK35, Deere/Hitachi 35D/G. **OKADA TOP300** SN:2912

EXCAVATOR BUCKETS

(2) UNUSED CAT 5 YARD 80IN. DIGGING BUCKET

7 MOTOR GRADERS



2016 CAT 140M3 SN:N9M00408 powered by Cat diesel engine, equipped with EROPS, air, heat, rearview camera, 14ft. Moldboard, hydraulic sideload, TIP control, push block, rear ripper, Grade Control.



2014 CAT 140M2 SN:R9M00455 powered by Cat diesel engine, equipped with EROPS, air, heat, 14ft. Moldboard, push block, rear ripper, Top Con System, 20.5R25 rubber.

2014 CAT 12M SN:B9F01075 powered by Cat diesel engine, equipped with EROPS, air, 14ft. Moldboard, hydraulic sideshift, TIP control, scarifier w/ teeth, 17.5 x 25 rubber.

CAT 12G SN:09682 powered by Cat diesel engine, equipped with EROPS, heat, moldboard, front scarifier adapter, front push block, 14.00 x 24 rubber.

(2) 2019 CASE 856C powered by diesel engine, equipped with Low Pro EROPS, air, heat, camera and monitor, 12ft. moldboard, hydraulic sideshift, TIP control, 5-shank rear ripper, front push block, 17.5R Michelin rubber.

2008 CASE 885 SN:N8AF05144 powered by Cummins diesel engine, equipped with EROPS, air, heat, radio, 14ft. Moldboard, push block, 3-shank rear ripper, 20.5 x 25 rubber.

12 RUBBER TIRED LOADERS

2014 CAT 966M powered by Cat diesel engine, equipped with EROPS, air, heat, quick coupler, GP bucket. Forks Sell Separately.

2014 CAT 966K SN:TF501243 powered by Cat diesel engine, equipped with EROPS, air, heat, quick coupler, GP bucket. Forks Sell Separately.



2015 CAT 950M SN:EMB00824 powered by Cat diesel engine, equipped with EROPS, air, heat, GP bucket, 345LB-32 skidder rubber. Forks Sell Separately.

2015 CAT 950M SN:EMB00331 powered by Cat diesel engine, equipped with EROPS, air, heat, GP bucket, 345LB-32 skidder rubber. Forks Sell Separately.

2017 CAT 938M SN:J3R03189 powered by Cat diesel engine, equipped with EROPS, air, heat, quick coupler, GP bucket, 20.5 x 25 rubber. Forks Sell Separately.

2015 CAT 938K SN:SWL03823 powered by Cat diesel engine, equipped with EROPS, air, heat, GP bucket, 28L-26 rubber. Forks Sell Separately.

2015 CAT 938K SN:SWL03808 powered by Cat diesel engine, equipped with EROPS, air, heat, GP bucket, 28L-26 rubber. Forks Sell Separately.



2013 CAT 938K SN:SWL01363 powered by Cat diesel engine, equipped with EROPS, air, heat, quick coupler, GP bucket, 28LB-26 skidder rubber.



2012 CAT 938K SN:SWL00868 powered by Cat diesel engine, equipped with EROPS, air, heat, GP bucket, 28L-26 skidder rubber. Forks Sell Separately.



2009 CAT 938H SN:MJC00468 powered by Cat diesel engine, equipped with EROPS, air, heat, quick coupler, GP bucket, 28LB-26 skidder rubber. Forks Sell Separately.

2015 JOHN DEERE 644K SN:665905 powered by John Deere diesel engine, equipped with EROPS, air, heat, rearview camera, GP bucket, 28L x 26 skidder rubber.

2013 CASE 621FXT SN:NDF219953 powered by diesel engine, equipped with EROPS, air, 3 yard GP bucket.

29 CRAWLER TRACTORS



2018 CAT 77E SN:HKA00525 powered by Cat diesel engine, equipped with EROPS, air, heat, Straight blade w/ tilt, 24in. Pads, 3rd valve, drawbar.



2016 CAT 77E SN:HKA00471 powered by Cat diesel engine, equipped with EROPS, air, heat, Straight blade w/ tilt, 3rd valve.



2018 CAT D6TLGP SN:JML00379 powered by Cat diesel engine, equipped with EROPS, air, heat, sweeps, Straight blade w/ tilt, 36in. Pads, Paccar winch.

2016 CAT D6TXWVP SN:WRN00536 powered by Cat diesel engine, equipped with EROPS, air, heat, 6 way blade, 3-shank rear ripper, Accugrade.



2015 CAT D6TVPLGP SN:RAD00773 powered by Cat diesel engine, equipped with EROPS, air, heat, sweeps & screens, 6 way blade, 31in. Pads, Diamond 3-shank rear ripper.



2015 CAT D6TVPLGP SN:RAD00901 powered by Cat diesel engine, equipped with EROPS, air, heat, sweeps & screens, 6 way blade, 31in. Pads, Diamond 3-shank rear ripper.

2014 CAT D6TLGP SN:ZJB01407 powered by Cat diesel engine, equipped with EROPS, air, heat, sweeps, Straight blade w/ tilt, wide pads, 3-shank rear ripper.

2014 CAT D6TVPLGP SN:KSB01758 powered by Cat diesel engine, equipped with EROPS, air, heat, sweeps & screens, 6 way blade, 3-shank rear ripper, Grade Control.

2014 CAT D6TVPLGP SN:RAD00358 powered by Cat diesel engine, equipped with EROPS, air, heat, sweeps & brush guards, 6 way blade, 31in. Pads, 3-shank rear ripper.



2013 CAT D6TVPLGP SN:KSB01347 powered by Cat diesel engine, equipped with EROPS, air, heat, sweeps, 6 way blade, 31in. Pads, 3-shank rear ripper, Accugrade.

CAT D6TLGP SN:HZB01163 powered by Cat diesel engine, equipped with EROPS, air, heat, Straight blade w/ tilt, 36in. Pads.



2019 CAT D6NLGP SN:SGG00815 powered by Cat diesel engine, equipped with EROPS, air, heat, sweeps & screens, 6 way blade, Grade Control.

2017 CAT D6NLGP SN:SGG00145 powered by Cat diesel engine, equipped with EROPS, air, heat, sweeps & screens, 6 way blade, 3-shank rear ripper, Grade Control.

2016 CAT D6NLGP SN:MG500407 powered by Cat diesel engine, EROPS, air, heat, sweeps, 6 way blade, wide pads. New Torque converter.



2016 CAT D6NLGP SN:PMG500424 powered by Cat diesel engine, equipped with EROPS, air, heat, sweeps & screens, 6 way blade, 33in. Pads, Diamond 3-shank rear ripper.



2016 CAT D6NLGP SN:MG500466 powered by Cat diesel engine, equipped with EROPS, air, heat, sweeps & screen, 6 way blade, wide pads, 3-shank rear ripper, Grade Control, new undercarriage from Mustang Cat.

2016 CAT D6NLGP SN:MG500326 powered by Cat diesel engine, equipped with EROPS, air, heat, sweeps & screen, 6 way blade, wide pads, 3-shank rear ripper, Grade Control.



CAT D6NLGP SN:CMC500713 powered by Cat diesel engine, equipped with EROPS, air, heat, sweeps & screens, 6 way blade, 33in. Pads, Diamond 3-shank rear ripper, Grade Control.



2017 CAT D6K2LGP SN:CEL700173 powered by Cat diesel engine, equipped with EROPS, air, heat, 6 way blade, 30in. Pads, Grade Control.



2015 CAT D6K2LGP SN:RST01192 powered by Cat diesel engine, equipped with EROPS, air, heat, sweeps, 6 way blade, 30in. Pads.

2015 CAT D6K2LGP SN:RST01187 powered by Cat diesel engine, equipped with EROPS, air, heat, sweeps & screens, 6 way blade, Grade Control.



CAT D6K2LGP SN:RST0145 powered by Cat diesel engine, equipped with EROPS, air, heat, 6 way blade, 30in. Pads, 3rd valve.

(2) 2020 CAT D5KXL powered by Cat diesel engine, equipped with OROPS, engine enclosures, V-blade, 18in. Pads, long track frame.



2017 CAT D5GLGP SN:RKG00983 powered by Cat diesel engine, equipped with EROPS, air, heat, 6 way blade, Grade Control.



2008 CAT D5K2LGP SN:YY00645 powered by Cat diesel engine, equipped with EROPS, air, heat, 6 way blade, 26in. Pads, Grade Control.

2019 JOHN DEERE 750KLGP SN:PGF302693 powered by John Deere diesel engine, equipped with EROPS, air, heat, 6 way blade, 34in. Pads.

2018 JOHN DEERE 700KLGP SN:TN303590 powered by John Deere diesel engine, equipped with OROPS, 144in. 6 way blade, wide pads.

2015 KOMATSU D61PX-23 SN:VEA031292 powered by Komatsu diesel engine, equipped with EROPS, air, heat, 6 way blade, 34in. Pads, 3rd valve hydraulics.

CRAWLER TRACTOR ATTACHMENTS

STRAIGHT BLADE W/ARMS to fit Cat D6.
12FT. ROOT RAKE

3 PIPE LAYERS

CAT D7G SN:92V01660 powered by Cat diesel engine, equipped with OROPS, Midwestern M571XL side boom, 22in. pads, rear drawbar.

CAT 561D SN:54X00756 powered by Cat diesel engine, equipped with Midwestern M561D conversion side boom, 40,000lb lift capacity, front angle blade, rear winch.

CAT 561C SN:92J118 powered by Cat diesel engine, equipped with Midwestern 561MMC conversion side boom, 40,000lb lift capacity, 20in. tracks, rear drawbar.

CRAWLER CARRIERS

CAT D7 SN:47A3285 powered by Cat diesel engine, equipped with OROPS, air compressor, 24in. tracks.

HITACHI CG100 SN:808-274 powered by Hino diesel engine, equipped with EROPS, flatbed dump body, rubber tracks.

3 TRACTOR LOADER BACKHOES



2017 CAT 420F2 SN:HWC01950 4x4, powered by Cat diesel engine, equipped with OROPS, GP front bucket, 24in. Rear digging bucket.



2015 CAT 420F2IT SN:HWD00191 powered by Cat diesel engine, equipped with OROPS, IT arrangement, GP front bucket, 24in. Rear digging bucket. Forks Sell Separately.

CAT 420D SN:OPOB4682 powered by Cat diesel engine, equipped with EROPS, air, heat, GP front bucket, 12in. Rear digging bucket.

SLIPFORM PAVER



GOMACO GP2400 powered by Cat diesel engine, equipped with 24ft. Paving width, 16in. Pads, 778 hours.

18 SCRAPER TRACTORS

CASE 600HD SN:ZCF129296 powered by Case IHPT diesel engine, 599.5hp, equipped with EROPS, air, heat, 16F x 2R full powershift transmission, quad coupler, scraper hitch, front counterweights, 710/70R42 tires.

2015 CASE 620 SN:ZFF308089 powered by 12.9L diesel engine, 620hp, equipped with EROPS, air, heat, 32in. Rubber tracks, quad coupler, front counterweights.



2014 CASE 620 SN:ZEF300749 powered by 12.9L diesel engine, 620hp, equipped with EROPS, air, heat, 32in. Rubber tracks, quad coupler, front counterweights.



2016 CASE 580HD STEIGER SN:ZFF308129 powered by Case IHPT diesel engine, 580.7hp, equipped with EROPS, air, heat, 16F x 2R full powershift transmission, quad couplers, scraper hitch, front counterweights, 800/70R32 dual tires.



2015 CASE 580HD STEIGER SN:ZEF304123 powered by Case IHPT diesel engine, 580.7hp, equipped with EROPS, air, heat, 16F x 2R full powershift transmission, quad couplers, scraper hitch, front counterweights, 800/70R32 dual tires.



2015 CASE 580HD STEIGER SN:ZFF303958 powered by Case IHPT diesel engine, 580.7hp, equipped with EROPS, air, heat, 16F x 2R full powershift transmission, quad couplers, scraper hitch, front counterweights, 800/70R32 dual tires.



2015 CASE 580HD STEIGER SN:ZFF304096 powered by Case IHPT diesel engine, 580.7hp, equipped with EROPS, air, heat, 16F x 2R full powershift transmission, quad couplers, scraper hitch, front counterweights, 800/70R32 dual tires.



2014 CASE 580HD STEIGER SN:ZEF300578 powered by Case IHPT diesel engine, 580.7hp, equipped with EROPS, air, heat, 16F x 2R full powershift transmission, quad couplers, scraper hitch, front counterweights, 800/70R32 dual tires.



2014 CASE 580HD STEIGER SN:ZEF301382 powered by Case IHPT diesel engine, 580.7hp, equipped with EROPS, air, heat, 16F x 2R full powershift transmission, quad couplers, scraper hitch, front counterweights, 800/70R32 dual tires.

2014 CASE 580HD STEIGER SN:ZEF301482 powered by Case IHPT diesel engine, 580.7hp, equipped with EROPS, air, heat, 16F x 2R full powershift transmission, quad couplers, scraper hitch, front counterweights, 800/70R32 dual tires.



2014 CASE 580HD STEIGER SN:ZEF300561 powered by Case IHPT diesel engine, 580.7hp, equipped with EROPS, air, heat, 16F x 2R full powershift transmission, quad couplers, scraper hitch, front counterweights, 800/70R32 dual tires.

2014 CASE 580HD STEIGER SN:ZEF304215 powered by Case IHPT diesel engine, 580.7hp, equipped with EROPS, air, heat, 16F x 2R full powershift transmission, quad couplers, scraper hitch, front counterweights, 800/70R32 dual tires.



2014 CASE 580HD STEIGER SN:ZEF301428 powered by Case IHPT diesel engine, 580.7hp, equipped with EROPS, air, heat, 16F x 2R full powershift transmission, quad couplers, scraper hitch, front counterweights, 800/70R32 dual tires.



2014 CASE 580HD STEIGER SN:ZEF301517 powered by Case IHPT diesel engine, 580.7hp, equipped with EROPS, air, heat, 16F x 2R full powershift transmission, quad couplers, scraper hitch, front counterweights, 800/70R32 dual tires.



CASE 550 QUAD TRAC SN:ZBF128254 powered by diesel engine, 549.9hp, equipped with EROPS, air, heat, 16/FX2R full powershift transmission, 30in. Rubber tracks, quad coupler, front counterweights..

CASE 380DVT SN:ZFRF02899 4x4, powered by Case 8.7LT diesel engine, equipped with EROPS, air, heat, CVT transmission, quad coupler, 3pt hitch, 480/95R50 rubber.

CASE 340 MAGNUM SN:JRF01541 4x4, powered by Case IH FPT 8.7L diesel engine, 340hp, equipped with EROPS, air, heat, 18 forward & 4 reverse transmission, 3pt hitch, 480/70R34 front tires, 710/70R42 rear tires, 2,446 hours.



CASE 9280 SN:JEF0032578 powered by Cummins NTA-855-A diesel engine, 375hp, equipped with EROPS, air, heat, quad coupler, 24.5R32 dual tires.

5 AGRICULTURAL TRACTORS

JOHN DEERE 7630 SN:D004610 4x4, powered by John Deere diesel engine, equipped with EROPS, air, heat, 3pt hitch, front counterweights, 480/70R34 front tires, 650/85R38 rear tires.

JOHN DEERE 6420 SN:394493 4x4, powered by John Deere diesel engine, equipped with EROPS, air, heat, 3pt hitch, Spectra precision, 3,747 hours.



JOHN DEERE 6155R VN:1BW615SRJD028629 powered by John Deere diesel engine, equipped with EROPS, 3pt hitch, PTO, front counterweights, 540/65R28 front rubber, 650/65R38 rear rubber.

STEIGER TIGER ST525 4x4, powered by diesel engine, equipped with EROPS. Parts Machine.

STEIGER TIGER ST470 Parts machine.

11 PULL BEHIND SCRAPERS



2015 K-TEC 1233 SN:KS2510 equipped with 33 cubic yard capacity, 80,000lb capacity, 12ft. Wide x 4ft. 3in. High x 12ft. 10in. Long, 23.5R25 radial rubber.



2015 K-TEC 1233 SN:KS2562 equipped with 33 cubic yard capacity, 80,000lb capacity, 12ft. Wide x 4ft. 3in. High x 12ft. 10in. Long, 23.5R25 radial rubber.



2014 K-TEC 1233 SN:KS2390 equipped with 33 cubic yard capacity, 80,000lb capacity, 12ft. Wide x 4ft. 3in. High x 12ft. 10in. Long, 23.5R25 radial rubber.



2014 K-TEC 1233 SN:KS2392 equipped with 33 cubic yard capacity, 80,000lb capacity, 12ft. Wide x 4ft. 3in. High x 12ft. 10in. Long, 23.5R25 radial rubber.



2014 K-TEC 1233 SN:KS2385 equipped with 33 cubic yard capacity, 80,000lb capacity, 12ft. Wide x 4ft. 3in. High x 12ft. 10in. Long, 23.5R25 radial rubber.



2014 K-TEC 1233 SN:KS2406 equipped with 33 cubic yard capacity, 80,000lb capacity, 12ft. Wide x 4ft. 3in. High x 12ft. 10in. Long, 23.5R25 radial rubber.



2014 K-TEC 1233 SN:KS2391 equipped with 33 cubic yard capacity, 80,000lb capacity, 12ft. Wide x 4ft. 3in. High x 12ft. 10in. Long, 23.5R25 radial rubber.



2014 K-TEC 1233 SN:KS2374 equipped with 33 cubic yard capacity, 80,000lb capacity, 12ft. Wide x 4ft. 3in. High x 12ft. 10in. Long, 23.5R25 radial rubber.



2013 K-TEC 1233 SN:KS2358 equipped with 33 cubic yard capacity, 80,000lb capacity, 12ft. Wide x 4ft. 3in. High x 12ft. 10in. Long, 23.5R25 radial rubber.



NAMMCO SN:1723 equipped with 15ft. Width, hydraulic tire raise, 425/65R22.5 rubber.



HOLLY 12FT. equipped with 12ft. Width, Topcon, 31x13.5-15 tires.

DRAG SCRAPER

NAMMCO LF530T SN:2276 equipped with 358.6in. Width, 21.5L-16.1 rubber.

3 SOIL STABILIZERS

2019 CAT RM500 SN:MB900217 powered by Cat C15 diesel engine, 546hp, equipped with EROPS, air, heat, 96in. Soil rotor, water system.



2018 WIRTGEN WR200XL SN:09WR0143 4x4, powered by diesel engine, 429hp, equipped with cab, air, 7ft 10in working width, 19in working depth, 23.1R26 rubber, 1,968 hours.



BOMAG MPH122 SN:90061074 4x4, powered by Deutz diesel engine, 482hp, equipped with EROPS, air, heat, 84.5in. Rotor width, 750/65R26 rubber, 3,087 hours.

ASPHALT ROLLER

RAYGO SN:06F2485D powered by diesel engine, equipped with ROPS, 36in. Smooth drum, double drum, vibratory drum, drum drive, water system.

9 VIBRATORY ROLLERS

2015 CAT CS66B SN:S66D0122 powered by Cat diesel engine, equipped with EROPS, air, heat, 84in. Smooth drum, vibratory drum, 570/75-26R rubber.



2014 CAT CP56B SN:LHC00480 powered by Cat diesel engine, equipped with OROPS, 84in. padsfoot drum, vibratory drum, drum drive, 23.1-26 rubber, 3,911 hours.

2013 CAT CP56B SN:LHC00243 powered by diesel engine, equipped with OROPS, 84in. Padsfoot drum, vibratory drum, drum drive.



2014 CAT CS56B SN:L8H00847 powered by Cat diesel engine, equipped with OROPS, 84in. Smooth drum, vibratory drum, drum drive, 23.1-26 rubber, 3,880 hours.

2012 CAT CS56B SN:L8H00209 powered by Cat diesel engine, equipped with EROPS, air, heat, 84in. Smooth drum, vibratory drum drive, 23.1-26 rubber.



CAT CP56B SN:C5P00209 powered by Cat diesel engine, equipped with OROPS, 84in. padsfoot drum, vibratory drum, drum drive, 23.1-26 rubber.

2007 CAT CS-533E SN:DAK00554 powered by Cat diesel engine, equipped with OROPS, 84in. Smooth drum, vibratory drum, drum drive, 18-26 rubber.



2013 CAT CP44 SN:MPC00223 powered by Cat diesel engine, equipped with OROPS, 66in. padsfoot drum, vibratory drum, drum drive, 14.9-24 rubber, 2,949 hours.

2013 SAKAI SV540T SN:10106 powered by diesel engine, equipped with OROPS, 84in. padsfoot drum, vibratory drum, drum drive, 23.1-26-10PR tires.

9 RUBBER TRACKED SKID STEERS

2019 CAT 299D2 SN:JFD202148 powered by Cat diesel engine, equipped with rollcage, auxiliary hydraulics, mechanical quick coupler, 17in. rubber tracks, 72in. GP bucket.

2019 CAT 299D2 SN:JFD202738 powered by Cat diesel engine, equipped with rollcage, auxiliary hydraulics, mechanical quick coupler, 17in. rubber tracks, 72in. GP bucket.

2020 CAT 259D2 SN:FTL24004 powered by Cat diesel engine, equipped with rollcage, auxiliary hydraulics, mechanical quick coupler, rubber tracks, GP bucket.



2017 CAT 259D SN:FTL11750 powered by Cat diesel engine, equipped with rollcage, auxiliary hydraulics, 2-speed, auxiliary hydraulics, mechanical quick coupler, 16in. Rubber tracks, 74in. GP bucket, 2,066 hours.



2015 CAT 259D SN:FTL04159 powered by Cat diesel engine, equipped with rollcage, auxiliary hydraulics, 2-speed, auxiliary hydraulics, mechanical quick coupler, 16in. Rubber tracks, 74in. GP bucket.

2015 CAT 259D SN:FTL03688 powered by Cat diesel engine, equipped with rollcage, auxiliary hydraulics, 2-speed, auxiliary hydraulics, mechanical quick coupler, 16in. Rubber tracks, 74in. GP bucket, 3,349 hours.

2018 CASE TV370 SN:NJM448764 powered by diesel engine, equipped with rollcage, auxiliary hydraulics, mechanical quick coupler, rubber tracks, GP bucket, 1,666 hours.

2018 CASE TV370 SN:NJM44644 powered by diesel engine, equipped with rollcage, auxiliary hydraulics, mechanical quick coupler, rubber tracks, GP bucket, 1,939 hours.

2016 CASE TR270 SN:NGM424692 powered by diesel engine, equipped with rollcage, auxiliary hydraulics, mechanical quick coupler, rubber tracks, GP bucket.

SKID STEER

2015 JOHN DEERE 318E SN:1T0318EAFJ279522 powered by John Deere diesel engine, equipped with rollcage, auxiliary hydraulics, mechanical quick coupler, GP bucket.

MINI TRACK LOADER



NEW COUGAR CG823 powered by Honda GTX 690 gas engine(Engine USA and CARB), 22hp, equipped with auxiliary hydraulics, mechanical quick coupler, rubber tracks, 33in. GP bucket, ride on step.

4 SKID STEER ATTACHMENTS



CAT TRENCHER
NEW TROJAN HYDRAULIC HAMMER



NEW TROJAN FORKS
48IN. FORKS

TELESCOPIC FORKLIFTS



2013 CAT TL1255C SN:DHW00583 4x4, powered by Cat C4.4 ACERT diesel engine, equipped with EROPS, air, heat, 12,000lb lift capacity, 55ft. Reach height, front stabilizers, rotating forks, 400/75-28 rubber.

2017 CAT TL1055D SN:ML500958 4x4, powered by Cat C4.4 ACERT diesel engine, equipped with EROPS(missing door), air, heat, 10,000lb lift capacity, 55ft. Reach height, front stabilizers, rotating forks, 400/75-28 rubber.

ROUGH TERRAIN FORKLIFTS

CASE 588H SN:JDC595380 powered by Case diesel engine, equipped with OROPS, 8,000lb lift capacity, 3-stage mast.

CASE 586H SN:NCC570080 powered by Case diesel engine, equipped with OROPS, 6,000lb lift capacity, 3-stage mast, 19.5L24 front tires, 12 x 16.5 rear tires, 2,522 hours.

BOOM LIFT

GENIE S80 SN:S800-3861 4x4, powered by diesel engine, equipped with 80ft. Platform height, straight boom, 500lb lift capacity.

26 SCISSOR LIFTS

2015 SKYJACK SJ3226 SN:27023583 electric powered, equipped with 26ft. Platform height, slide out deck, 500lb lift capacity.

(24)2013 SKYJACK SJ3219 electric powered, equipped with 19ft. Platform height, slide out deck, 500lb lift capacity.

2016 JLG 20MVL SN:0130024599 electric powered, equipped with 20ft. Platform height, slide out deck, 500lb lift capacity.

6 AIR COMPRESSORS

2021 AIRMAN PDS185S SN:B4-6E13260 powered by Yanmar diesel engine, equipped with 185CFM, trailer mounted, 378 hours.

2021 AIRMAN PDS185S SN:B4-6E13255 powered by Yanmar diesel engine, equipped with 185CFM, trailer mounted, 165 hours.

2021 AIRMAN PDS185S SN:B4-6E13147 powered by Yanmar diesel engine, equipped with 185CFM, trailer mounted, 583 hours.

2021 AIRMAN PDS185S SN:B4-6E13142 powered by Yanmar diesel engine, equipped with 185CFM, trailer mounted, 220 hours.

2013 ATLAS COPCO XAS185JD7

SN:4500A1015DR043686 powered by John Deere diesel engine, equipped with 185CFM, trailer mounted.

SULLAIR 185CFM SN:146028 powered by John Deere diesel engine, equipped with 185CFM, trailer mounted, 973 hours.

5 LIGHT PLANTS

ALLMAND NIGHT LITE PRO III powered by Kubota diesel engine, equipped with 4-1,000 watt lightbulbs, 6KW, trailer mounted.

MAGNUM SN:408493 powered by 3 cylinder diesel engine, equipped with 4-1,000 watt lightbulbs, 6KW, trailer mounted.

MAGNUM powered by 3 cylinder diesel engine, equipped with 4-1,000 watt lightbulbs, 6KW, trailer mounted.

MAGNUM SN:306773 powered by 3 cylinder diesel engine, equipped with 4-1,000 watt lightbulbs, 6KW, trailer mounted, 1,273 hours.

ULTRAQUIP powered by Kubota diesel engine, equipped with 4-1,000 watt lightbulbs, 6KW, trailer mounted, 1,124 hours.

3 WATER PUMPS

GORMAN-RUPP CE6A60-4045D SN:1179775 powered by John Deere diesel engine, equipped with 6in. water pump, trailer mounted, single axle.

WACKER PT6 powered by diesel engine, equipped with 6in. pump, trailer mounted, single axle.

MAGNUM MTP4000S powered by John Deere diesel engine, equipped with 6in. water pump, trailer mounted, tandem axle.

CONCRETE EQUIPMENT



(2) CONCRETE BUCKET

BORING EQUIPMENT

DITCH WITCH FX30 SN:60000039 powered by Kubota diesel engine, equipped with hose reel, water tank, 800 gallon tank, trailer mounted.

COMMERCIAL MOWERS

JOHN DEERE Z930R SN:51194 powered by gas engine, equipped with 7 Iron Pro 60 deck, zero turn, 134 hours.



JOHN DEERE Z930R SN:70715 powered by gas engine, equipped with 7 Iron Pro 60 deck, zero turn, 45 hours.

LOADER LANDSCAPE TRACTOR

CAT 415F SN:CPF401137 4x4, powered by Cat diesel engine, equipped with OROPS, GP front bucket, box blade, ripper, 2,575 hours.

TRACTOR LOADER

FORD 345C SN:K503326 powered by diesel engine, 52hp, equipped with ROPS, front loader w/ GP bucket, PTO, 3pt hitch, box blade.

14 TRACTOR ATTACHMENTS

10FT. BOX BLADE 3pt hitch.
GRADER MASTER 7FT. BOX BLADE 3pt hitch.
6FT. BOX BLADE
GANNON BOX BLADE SN:57146
(2) KUHN 7FT. TILLER SN:950373 3pt hitch.
O.S. LIMITED AERATOR 3pt hitch.
30IN. AUGER BIT
24IN. AUGER BIT
18IN. AUGER BIT
FRONT COUNTERWEIGHTS
BLEC BV230HD TILLER SN:51767 3pt hitch.



JOHN DEERE HX10 MOWER



AMCO AD540V DITCHER equipped with 3pt hitch, PTO..

4 TILLAGE EQUIPMENT

JOHN DEERE 862NT DISC WING SN:12040926W equipped with 26ft. 8in. Width, 385/65R22.5 rubber.



ROME ACH-29 DISC SN:ACH-29-114 equipped with 12.5L-18SL 12 Ply rubber.

10FT. OFFSET 33IN. DISC

AMCO LOF-2424 DISC SN:7040154 3pt hitch.

MANURE SPREADER

SN:27147 hydraulic drivn, 700/40x22.5 tires.

SPREADER

FERTILIZER 16.00-24 tires.

GRAIN DRILLS

SUNFLOWER 9421-20 DISC SN:9421107028 equipped with 9.5L-5SL rubber.



SUNFLOWER 1434-21 DISC SN:20020341 equipped with 11L-15SL 13 Ply rubber.

LANDSCAPE EQUIPMENT

CUSHMAN GROOM MASTER SN:98001517 powered by gas engine, equipped with 67in. Box blade, 415 hours.

4 SWEEPERS

LAYMOR SM300 SN:35912 powered by Kubota diesel engine, equipped with OROPS, 8ft. Broom, water system, ST205/75R14 tires, 642 hours.

LAYMOR SM300 SN:34675 powered by Kubota diesel engine, equipped with OROPS, 8ft. Broom, water system, ST205/75R14 tires, 864 hours.

LAYMOR SM300 powered by diesel engine, equipped with ROPS, 8ft sweeper, water system, 642 hours.

TERRAMITE TSS48 SN:213TS0322 powered by Kubota diesel engine, equipped with OROPS, 8ft. Broom, water system, ST205/75R14 tires, 940 hours.

3 WATER TRUCKS

2010 PETERBILT PB348 VN:119535 powered by Paccar PX-8 diesel engine, equipped with Allison automatic transmission, power steering, Klein 4000 gallon water tank, front, side, and rear spray heads, rear hose, tandem axle.

PETERBILT 357 VN:667760 powered by Cat C9 diesel engine, equipped with Allison automatic transmission, 4000 gallon water tank, front and rear spray heads, tandem axle.

MACK CNH613 VN:N001833 powered by Mack diesel engine, equipped with Maxitorque 10 speed transmission, 4000 gallon water tank, front, side, and rear spray heads, tandem axle.

CAB & CHASSIS

2016 FORD F350 VN:B56101 powered by V8 gas engine, equipped with automatic transmission, power steering, dual wheel single axle, 174,481 miles.

3 UTILITY TRUCKS

2018 FORD F550XL VN:B85590 4x4, powered by 6.7L Power Stroke diesel engine, equipped with automatic transmission, power steering, crew cab, Royal 12ft. Utility body, dual wheel single axle, 170,222 miles.



2018 FORD F350STX VN:EC70921 4x4, powered by 6.2L gas engine, equipped with automatic transmission, power steering, Royal 8ft. Utility body, 179,804 miles.



2003 FORD F250XLT VN:A91408 4x4, powered by Triton 5.4L gas engine, equipped with power steering, crew cab, 9ft. Flatbed body, 102,945 miles.



2012 FORD F550 VN:235441 4x4, powered by Cummins diesel engine, equipped with automatic transmission, power steering, Maintainer service body, Maintainer 6,500lb crane, RC-40 air compressor, Bobcat welder, dual wheel single axle, 255,266 miles.

6 SERVICE TRUCKS



2016 FORD F450 VN:EC88858 4x4, powered by 6.7L Power Stroke diesel engine, equipped with automatic transmission, power steering, Harbor 12ft. Utility body, tool boxes, fuel tank w/ pump, gooseneck hitch, dual wheel single axle, 149,013 miles.



2017 PETERBILT 337 VN:2NP2HM7X1HM387211 powered by Paccar PX-7 diesel engine, 250hp, equipped with Allison 2500 RDS automatic transmission, power steering, clutch shift PTO, IMT Dominator II 14ft. Service body, IMT 10,000lb crane, 30ft. 10in. horizontal reach, MI-T-M air compressor/generator, welder, lube kit, aluminum rock guards, bumper vise, Line-X bed floor, 21 gallon hydraulic reservoir, manual outriggers, spring suspension, air brakes, 22.5 tires, dual wheel single axle, 70,215 miles.



2007 KENWORTH T300 VN:211995 powered by Paccar PX-8 diesel engine, 330hp, equipped with Eaton 10 speed transmission, power steering, Service body, Autocrane 8,000lb lift crane, Boss BA435 air compressor, Miller Big Blue welder, hydraulic outriggers, 11R22.5 tires, dual wheel single axle.

5 FLATBED TRUCKS

2020 FORD F450 KING RANCH powered by 6.7L Power Stroke diesel engine, equipped with automatic transmission, power steering, crew cab, flatbed body, dual wheel single axle, 43,553 miles.



2018 FORD F350XL VN:C23257 4x4, powered by 6.2L gas engine, equipped with automatic transmission, power steering, crew cab, Norstar 9ft. Flatbed body, gooseneck hitch, 87,772 miles.

2017 PETERBILT 337 VN:2NP2HM7X8HM387206 powered by Paccar PX-7 diesel engine, 250hp, equipped with Allison 2500 RDS automatic transmission, power steering, clutch shift PTO, IMT Dominator II 14ft. Service body, IMT 10,000lb crane, 30ft. 10in. horizontal reach, MI-T-M air compressor/generator, welder, aluminum rock guards, bumper vise, Line-X bed floor, 21 gallon hydraulic reservoir, manual outriggers, spring suspension, air brakes, 22.5 tires, dual wheel single axle, 131,551 miles.



2012 PETERBILT 337 VN:2NP2HN7X9CM162274 powered by Paccar PX-8 diesel engine, equipped with Eaton 10 speed transmission, power steering, Service body, Stellar 10628 10,000lb crane, hydraulic outriggers, Lincoln 305G Ranger welder, Infinity air compressor, oil tank, dual wheel single axle, 198,190 miles.



2017 FORD F350XL VN:D94674 4x4, powered by 6.7L Power Stroke diesel engine, equipped with automatic transmission, power steering, CM 9ft. Flatbed body, gooseneck hitch, tool boxes, 126,915 miles.

ROLLBACK TRUCK



2012 KENWORTH T440 VN:956363 powered by Paccar PX-8 engine, 330hp, equipped with Allison automatic transmission, a/c, 28ft rolloff body, winch, hydraulic rear hitch, air ride suspension, aluminum wheels, 11R22.5 tires, tandem axle, 187,000 miles.

CONCRETE PUMP TRUCK



2012 MACK MRU613 VN:DM009667 powered by Mack MP7 diesel engine, equipped with Eaton 8 speed transmission, power steering, 2012 Alliance JXR37-4.16 pumper (sn:1206), 123ft. 4in. Reach height, tandem axle.



2017 FORD F350 VN:HEB56091 4x4, powered by 6.7L Power Stroke engine, equipped with automatic transmission, power steering, Custom 9ft. Flatbed Body, tool boxes, fuel tank w/ pump, gooseneck hitch, dual wheel single axle, 153,733 miles.



2015 FORD F650 VN:A00870 powered by 6.7L Power Stroke diesel engine, equipped with automatic transmission, power steering, service body, Autocrane 8,000lb crane, Palfinger PRC 45V air compressor, Miller Bobcat welder, hydraulic outriggers, dual wheel single axle, 93,425 miles.

LYON

6 TRUCK TRACTORS

(3) 2019 MACK ANTHEM 64T powered by Mack MP8 diesel engine, 505hp, equipped with Mack 14AFO-HD M drive 14 speed automatic transmission, power steering, a/c, sleeper, (2) fuel tanks, engine block heater, 3.58 ratio, 46,000lb rears, 191in. Wheelbase, Michelin 11R22.5 tires, tandem axle. 6-year, 600,000-mile power plus warranty.



2011 PETERBILT 388 VN:150014 powered by Cummins ISX diesel engine, 600hp, equipped with Eaton 18 speed transmission, power steering, wet line, 256in. Wheelbase, air lift steerable axle, triaxle.



2011 PETERBILT 388 VN:136747 powered by Cummins ISX-25 diesel engine, 525hp, equipped with Eaton 18 speed transmission, power steering, wet line, 265in. Wheelbase, air lift third axle, triaxle.



2005 PETERBILT 378 VN:643442 powered by Cat C15 diesel engine, equipped with Eaton 18 speed transmission, power steering, wet kit, 200in. Wheelbase, tandem axle.

DUMP TRUCK

2005 STERLING ACTERRA VN:N72033 powered by Cat diesel engine, equipped with diesel engine, equipped with 10 speed transmission, power steering, dump body, tandem axle.

11 PICKUP TRUCKS

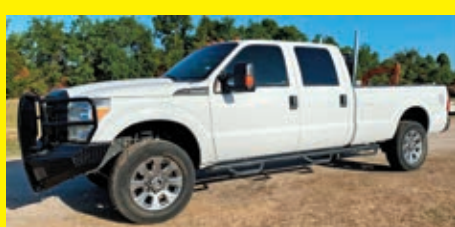


2017 FORD F450XL VN:ED28771 4x4, powered by 6.7L Power Stroke diesel engine, equipped with automatic transmission, power steering, crew cab, dual wheel single axle, 116,577 miles.



2021 FORD F350 4x4, powered by 6.2L gas engine, equipped with automatic transmission, power steering, crew cab, long bed, 23,685 miles.

2019 FORD F350XL VN:1FT8W3BT1KEE26487 4x4, powered by 6.7L diesel engine, equipped with automatic transmission, power steering, crew cab, long bed, 82,952 miles.



2016 FORD F350 VN:D08289 4x4, powered by 6.2L gas engine, equipped with automatic transmission, power steering, crew cab, long bed, 145,983 miles.



2016 FORD F350 VN:C21811 4x4, powered by 6.2L gas engine, equipped with automatic transmission, power steering, crew cab, long bed, 135,964 miles.



2021 FORD F250 4x4, powered by 7.3L gas engine, equipped with automatic transmission, power steering, crew cab, long bed, 19,750 miles.



2020 FORD F250 VN:C51721 powered by gas engine, equipped with automatic transmission, power steering, extended cab, 107,047 miles.



2020 FORD F250 VN:C51728 powered by gas engine, equipped with automatic transmission, power steering, crew cab, 114,668 miles.



2019 CHEVY 2500HD VN:144921 powered by gas engine, equipped with automatic transmission, power steering, crew cab, 120,082 miles.



2018 CHEVY 1500 VN:Z261632 powered by gas engine, equipped with automatic transmission, power steering.

2015 NISSAN FRONTIER VN:1N6AD0ER0FN746585 powered by gas engine, equipped with automatic transmission, power steering.

SPORT UTILITY VEHICLE



2013 JEEP WRANGLER VN:570305 4x4, powered by 3.6L gas engine, equipped with automatic transmission, power steering, 6-door, XRC winch, 55,706 miles.

VAN



2018 CHEVY EXPRESS VN:175363 powered by Vortec gas engine, equipped with automatic transmission, power steering, 12-passenger, 80,092 miles.

DETACHABLE GOOSENECK TRAILERS



2018 LOAD KING 554/5 SSF VN:030828 equipped with 55 ton capacity, non-ground bearing, 26ft well, 9ft wide, outriggers, rear wheel covers, air ride suspension, aluminum wheels, 275/70R22.5 tires, 2-rear air lift axle, quad axle.



2012 LOAD KING 554SS VN:28247 equipped with 55 ton capacity, non-ground bearing, 26ft well, 9ft wide, outriggers, rear wheel covers, air ride suspension, aluminum wheels, 275/70R22.5 tires, 2-rear air lift axles, quad axle.

DUMP TRAILER



2012 RANCO VN:661380 equipped with round bottom dump body, Cramaro tarp system, 11R22.5 tires, tandem axle.

BELLY DUMP TRAILER



XL SPECIALIZED XL60BD VN:N/A equipped with belly dump body, Cramaro tarp system, 11R24.5 tires, tandem axle.

5 TAGALONG TRAILERS



2019 MAXX D 20FT. VN:8BK205LM070101 equipped with 20ft. X 8ft. Deck, tandem axle.

2017 TEXAS MADE 20FT. equipped with 20ft. X 8ft. Deck, ramps, ball hitch, tandem axle.

TEXAS MADE 20FT. VN:70034 equipped with 20ft. X 8ft. Deck, ramps, ball hitch, tandem axle.



UTILITY 20FT. VN:59JT1LT21HD596806 equipped with 20ft. X 82in. Deck, ramps, tool box, 235/85R16 tires, tandem axle.

UTILITY 18FT. VN:N/A equipped with 18ft. X 7ft. Deck, ramps, ball hitch, tandem axle.

3 GOOSENECK TRAILERS

2007 VN:80573 equipped with 5-roll capacity, 235/85R16 tires, tandem axle.

2003 VN:33074 equipped with 30ft. X 8ft. Deck, 5ft. Dovetail, ramps, 215/75R17.5 tires, tandem axle.

1998 ODOM VN:641966 equipped with 30ft x 92in. Deck, 5ft. Dovetail, ramps, tandem axle.

3 CARGO TRAILERS



2020 CARRY-ON 7X16CGRCM VN:5049 equipped with 7,000 GVWR, 7ft wide, 16ft length, side door, lay down rear door, ST205/75D15C tires, tandem axle.

CARRY-ON 7X16CGRCM VN:5049 equipped with 7,000 GVWR, 7ft wide, 16ft length, side door, lay down rear door, ST205/75D15C tires, tandem axle.



FOREST RIVER TXCM718TA4 VN:84598 equipped with 12,000lb GVWR, 18ft length, 7ft wide, side door, laydown rear door, 2016 Atlas Copco XAS110 air compressor, powered by Kubota diesel engine, tandem axle.

FUEL TRAILER

TEXAS VN:15890 equipped with 750 gallon tank, Honda powered pump, 235/80R16 tires, tandem axle.

FUEL/LUBE TRAILER



LDL VN:1L9L1UG25CP414891 Mi-T-M air compressor/generator: powered by Honda gas engine, Fuel pump: powered by Power Pro, diesel hose reel, gas hose reel, ball hitch, tandem axle.

WATER TOWER



2019 KLEIN KPT-120 SN:42841 equipped with 12,000 gallon water tank, hydraulic raise, water filler, Honda engine, single axle.

WATER TRAILERS



(2)MULTIQUIP powered by Honda gas engine, equipped with 500 gallon tank, tandem axle.

6 CONTAINERS

(6) 20FT.

LYON ALEX & SON

SOCIAL



CONTACT

Syracuse, NY - Headquarters

315-633-2944

315-633-2872

315-633-9544

Fax: 315-633-8010

support@lyonauction.com

CONTACT US

LATEST ARTICLES

Upcoming Summer Auctions 2022

WEDNESDAY, JUNE 1, 2022

Hazards of working around heavy

equipment

WEDNESDAY, MAY 25, 2022

How to win in auction bidding

THURSDAY, MAY 19, 2022

MORE ARTICLES

NEWSLETTER

Full Name

Type your name

Email*

Type your email

SUBMIT





AUCTION CALENDAR

Go to WWW.LYONAUCTION.COM for START-STOP times on our TIMED & LIVE AUCTIONS

1. **LIVE:** Saturday, August 6: **YOUNGSTOWN, OHIO:** Complete Liquidation. Paving & Trucking & Construction Equipment. **HIGHLIGHTS:** (6)2013-2010 7-Axle Dump Trucks, 2006 Sterling 6-Axle, 2006 Sterling Tri., 2006 Sterling Tri.(flowboy), 2009-2006-1999-1986 IH Series(tri), (4)2013 Peterbilt(t/a) Truck Tractors, (4)Blaw Knox RW100 Road Wideners, (2)One-of-a-Kind Cat AP1055B Pavers, Blaw Knox PF172-8, Hypac C560A, Hypac C778B, IR PT125B, (2)Elgin Sweepers, (2)Like New Kubota Tractor/Brooms, Cat 426B, JD 310C, (2)2014 Hyundai 780-9A Loaders, (4)Red River 28ft. Trailers, (8)East & Mac Dump Trailers, 2011 50-ton Lowboy Trailer plus much more.

2. **LIVE:** Friday, August 12: **LONG ISLAND, NEW YORK (JFK AIRPORT):** Snow & Construction Equipment, Rubber Tired Loaders, Skid Steers, Snow Trucks, Service & Pickup Trucks, Large Quantity of Attachments & Support Equipment.

3. **2-PART, 2-DAY AUCTION. PART 1 TIMED:** Closes- Wednesday, August 17, Opens- Wednesday, August 10: **HOUSTON, TEXAS:** Large Quantity of Support Equipment, Generators, Water Pumps, Welders, Trench Boxes, Shoring, Attachments and more.

4. **PART 2 LIVE:** Thursday, August 18: **HOUSTON, TEXAS:** Bankruptcy Sale. Very Large 1 Owner Sale. Late Model Construction, Paving Equipment, Agricultural Tractors & Implements, Truck Tractors, Dump Trailers, All Types of Support Trucks. (The Best). \$65,000.000 replacement cost). **HIGHLIGHTS:** (25)Late Model Cat IH SteigerPulling Tractors, (11)Late Model KTeC 1233, (1)Cat Vibratory Rollers, (3)Late Model Cat D7E, (10)Cat D6TLGP, (4)Cat D6NLGP, (4)Cat D6KLGP, (2)Cat D5KLGP, (2)Cat 374F, (12)Cat 349FL, (4)Cat 336FL, Cat 336EL, (8)Cat 745C, (3)Cat 740B, (3)Cat 950M, Cat 966M, (5)Ca938, Large Quantity GPS, (3)Cat 140M, 2019 Wirtgen Reclaimer, Approx. (50) Trucks & Trailers, Road Tractors, Service, Water, Flatbed Trucks, Pickups Detachable, Gooseneck & Livestock Trailers.

5. **LIVE:** Thursday, August 25: **TROY (CHARLOTTESVILLE), VIRGINIA:** Major Job Completion. Late Model Cat & Mack Equipment and Trucks. 2020-2018 Hydraulic Excavators, Crawler Tractors, 2020 Truck Tractors, 2019 Dump Trucks.

6. **LIVE:** Saturday, August 27: **HUDSON, NEW HAMPSHIRE:** Retirement Auction. Property Is Sold. Very Large Moving & Rigging Company. One of the Most Interesting Auctions of the Year. **HIGHLIGHTS:** Range from 1930's Collectible New England Trucks Completely Restored, Large Quantity Rigging Equipment, Large Quantity Truck Tractors, Moving Trailers, Storage Containers, Many Forklifts, Skid Steers, Moving Boxes and Everything You Can Imagine in this type of Operation. The Best of the Best to be Found Here.

7. **ONLINE AUCTION:** Wednesday, August 31: **QUERETARO, MEXICO:** Late Model Cat, Case, John Deere, Volvo Construction Equipment, Aerial Lifts, Forklifts, Trucks and Trailers, Large Quantity Attachments & Support Equipment.

8. **LIVE:** Saturday, September 10: **LAS VEGAS, NEVADA:** Late Model Boom Lifts, (100)Scissor Lifts, Telescopic Forklifts, Construction Equipment Trucks Trailers, Support and Attachments.

9. **LIVE:** Friday, September 16: **NEW MARTINSVILLE, WEST VIRGINIA:** Phase One of Large Job Completion. Late Model Articulated Trucks, Construction Equipment, Utility Equipment, Truck Tractors, Dump Trucks, Attachments and Support. **EARLY HIGHLIGHTS:** Cat 950M, (2)Cat 950GC, Cat 926M, (3)Cat 326FLLR, (2)Cat 420F2IT.

10. **LIVE:** Saturday, September 17: **NEWARK, NEW JERSEY:** Snow Equipment & Snow Trucks, Attachments, Snow Plows, Very Large Quantity of Support Equipment.

11. **LIVE:** Thursday, September 22: **BUSHNELL, FLORIDA:** Late & Great Cat, Komatsu, John Deere & Doosan Construction Equipment, Aerial Lifts, All Types of Trucks Trailers, Support and Attachments.

12. **LIVE:** Saturday, September 24: **ATLANTIC CITY, NEW JERSEY:** Late Model Rental Fleet Construction, Utility Equipment, Aerial Lifts, Forklifts, Trucks, Trailers, Large Quantity Support Equipment and Buckets.

13. **TIMED:** Closes- Thursday, September 29, Opens- Friday, September 16: **NEW ENTERPRISE, PENNSYLVANIA:** Approximately 20 Locations. Quarry, Aggregate Equipment, Construction Equipment, Rubber Tired Loaders, Hydraulic Excavators, Rollers, Welders, Air Compressors, Skid Steers, Straight Frame & Articulated Haul Trucks, Truck Tractors, Dump Trucks, Support Trucks, All Types of Trailers, Support & Attachments.

14. **LIVE:** Friday, October 7: **ATKINSON, NEW HAMPSHIRE:** Large Quantity Late Model Trucks: Pickups, Service, Bucket & Derrick, Construction Equipment, Aerials and Forklifts.

15. **LIVE:** Saturday, October 8: **PLYMOUTH, MASSACHUSETTS:** Large Snow & Construction Equipment, Aerial Lifts, All Types of Trucks & Trailers, Snow Attachments & Accessories.

16. **LIVE:** Saturday, October 15: **CINCINNATI, OHIO:** 2 Auctions in One Day. Complete Liquidation. Earthmoving Division and Job Completion of Major Utility Construction Company. **HIGHLIGHTS:** Cat 615C, (2)Cat 621B, Cat D7, Cat D6, Cat 953, (2)Komatsu D37P-8, Superior Broom, Several Dump Trucks, Several Fire Trucks, Several Tagalongs, Komatsu PC200LC-6, Komatsu PC130LC-8, (2)JD 35G, 2018 Cat 930M, 2014 JD 700K/ sideboom, JD 6506LGP, Ditch Witch 4020AT, Ditch Witch 30 Boring Units.

17. **LIVE:** Thursday, October 20: **PITTSBURGH (ACME), PENNSYLVANIA:** Late Model Cat, John Deere, Komatsu, Volvo Construction Equipment, Aerial Lifts, Telescopic, Truck Tractors, Dump Trucks, Pickups, All Types of Trailers, Attachments & Support

18. **LIVE:** Thursday, October 27: **VICTORIA, TEXAS:** Major Job Completion. **HIGHLIGHTS:** 2018 Volvo A5G, (2)2015 Cat 725, Cat 16G, (Cat D6TLGP, (3)Cat D6RLGP, (2)Cat 330DLC(long reach), Steiger HD385, (6)Case IH 9380-9370, 2)Case IH 9370- 9350 Quad Trac Pulling Tractors, (6)17ft. & 14ft. Yard Pans, (2)Ford F750 Water Trailers, 2019 Ford F550 Service Truck, (2)Telescopic Forklifts, Manitowac 4500, Linkbelt 418, Grove 8050, Pile Driving Equipment

19. **LIVE:** Friday, November 4: **NEWPORT, VERMONT:** 1 Owner Auction. Large Construction, Logging, Recycling, Truck Tractor, Dump Truck, All Types of Trailers.

20. **LIVE:** Friday, November 11: **AKRON, OHIO:** Major Job Completion. Large Aggregate Division. Late Model Crushers, Screening Plants, Radial Stackers, Conveyors, Construction Equipment, Dump Trucks, Truck Tractors, Various Types of Support and Attachments.

21. **LIVE:** Saturday, November 12: **BUFFALO, NEW YORK:** Late Model Construction & Agricultural Equipment, Attachments, Support, Trucks, Trailers.

22. **LIVE:** Thursday, December 29: **ALBANY, NEW YORK:** Late Model Earthmoving Equipment, Cat Komatsu, John Deere, Volvo, Multiple Trucks, Trailers, Aerial Lifts, Forklifts, Attachments and Support.

NEW DATES TO BE ANNOUNCED

23. **TORONTO, CANADA:** Late Model Rentals of Agricultural Equipment, Construction Equipment, Attachments, Tools, Support, Various Trucks and Trailers.

24. **RACINE, WISCONSIN:** Job Completion Auction of Late Model Construction, Aggregate, Utility Equipment, Truck Tractors, Dump Trucks, Service & Pickup Trucks, Trailers, Attachments and Support.

25. **MANCHESTER, NEW HAMPSHIRE:** 2nd Annual Classic Car, Classic Truck, Classic Construction Equipment Auction. Something Really Neat.

26. **MID-NEW ENGLAND:** Retirement Auction. Construction Equipment, Utility Equipment, Forklifts, Crawler Tractors, Tractor Loaders, Backhoes, Support and Attachments.

27. **PITTSBURGH, PENNSYLVANIA:** Late Model Cat, John Deere, Komatsu, Volvo Construction Equipment, Aerial Lifts, Telescopic, Truck Tractors, Dump Trucks, Pickups, All Types of Trailers, Attachments & Support.

28. **BUTLER, PENNSYLVANIA:** Complete Liquidation. Real Estate is Sold. Construction Equipment, Vehicles, Very Large Quantity Shop Equipment, Parts and Attachments.

29. **MANCHESTER, NEW HAMPSHIRE:** 2 Sales in 1 Day. Rental Returns & Job Completion. Utility Equipment, Aerials, Forklifts, Air Compressors, Welders, Light Plants, All types of Trucks to include Truck Tractors, Dump Trucks, Pickup & Utility Trucks, Trailers, Attachments and Support.

30. **MONTREAL, CANADA:** Large Job Completion Auction. Construction, Utility Equipment, Trucks, Trailers, Support & Attachments.

31. **CHICAGO, ILLINOIS:** Construction Equipment, Aerial Lifts, Forklifts, Truck Tractors, Dump Trucks, Pickups, All Types of Trailers (Equipment & Van), Attachments and Support.

32. **ATTLEBORO, MASSACHUSETTS:** Large Quantity Late Model Trucks: Pickups, Service, Bucket & Derrick, Construction Equipment, Aerials and Forklifts.

MAIN OFFICE

315.633.2944 • 315.633.2872 • 315.633.9544
EVENINGS: (315) 637-8912, FAX: (315) 633-8010

BRANCH OFFICES

| | | | |
|-----------------|--------------|-------------------|--------------|
| ATLANTA, GA | 770.537.7386 | NASHVILLE, TN | 615.922.5197 |
| BRATTLEBORO, VT | 802.490.7894 | NEW LONDON, CT | 860.924.7735 |
| CHICAGO, IL | 312.724.5474 | OKLAHOMA CITY, OK | 405.438.3188 |
| COLUMBUS, OH | 614.254.5596 | PARKERSBURG, WV | 304.699.3050 |
| DALLAS, TX | 972.725.7761 | RACINE, WI | 262.886.2778 |
| DENVER, CO | 720.277.0263 | ST. LOUIS, MO | 314.570.4127 |
| DES MOINES, IA | 515.414.2868 | TAMPA, FL | 813.777.3273 |
| FORT WORTH, TX | 817.807.2761 | WASHINGTON, DC | 202.888.6003 |
| HARRISBURG, PA | 717.836.0919 | MONTREAL, QC | 579.490.5966 |
| HOUSTON, TX | 832.450.3910 | OTTAWA, ON | 579.490.5966 |
| LAS VEGAS, NV | 702.475.4992 | QUEBEC CITY, QC | 579.490.5966 |
| MOBILE, AL | 251.510.1538 | | |

FOLLOW US:  

FINANCING AVAILABLE FOR PRE-APPROVED PURCHASERS: You must have prior written approval

PATRIOT FINANCIAL LLC: Your one stop shop for all of your auction and equipment needs. For Immediate or pre-auction approval please call Customer Service at 866-633-8003 or you may apply on line with our secure site at www.patriotfinancialllc.com. You may also visit us at certain auctions to get your on-site approval. We do 100% financing, with no age restrictions and our minimum loan amount is \$5,000.00. We welcome new start-up business.

STREAMLINE FINANCIAL SERVICES is a nationally recognized lending specialist working with auction companies and vendors on a daily basis to assist their customers obtain financing for equipment. We offer a variety of financial solutions for light duty to heavy duty, titled equipment (trucks and trailers) to all non-titled equipment (yellow iron, aerial lifts, chippers, skid steers, etc). The representatives at Streamline Financial are experts in finding the best financial program for construction and transportation equipment. We have a solution for all levels of credit from A+ to challenged, and also offer Line of Credit and Working Capital programs to complement your businesses cash flow constraints. Please call Customer Service at 440-358-5060.

SMART BUSINESS CREDIT & LEASING: For instant credit approvals, contact Customer Service at 800-798-6862, or visit our on-site trailer at select auctions. Also available is a secure online application: www.Smartbusinesscredit.com 100% financing or leasing & customized financial packages available (\$10,000 minimum).

SALES TAX: All sales are subject to sales tax.

SALES TAX EXEMPTIONS: Buyers with a VALID exemption certificate are not required to pay sales tax for equipment and miscellaneous, but MUST present a copy of their certificate at time of registration at EACH SALE.

EXPORTERS: If you take possession of your purchase in the United States, you must pay sales tax. You must provide the information in order not to be charged: Bill of Lading - All export purchases must be removed by a trucking company. The trucking company will provide a Bill of Lading with the purchases listed.

NOTE: No items will be released without this document or you may pay tax and be reimbursed once the Bill of Lading or a Dock Receipt is received.

MOTOR VEHICLES AND TRAILER EXEMPTIONS: Specific for each state. Please call office for exemption details.



344 S. WARREN STREET, SUITE 201
SYRACUSE, NY 13202

PRSR
FIRST CLASS
U.S. POSTAGE
PAID
MAILED FROM
ZIP CODE 36119
PERMIT NO. 456

All information contained in this brochure was derived from sources believed to be correct, but not guaranteed. We shall not be held liable for any typographical errors or inaccuracies in the content of this brochure. All announcements made day of sale supersede any printed material.



PLEASE SCAN
QR CODE
FOR UP-TO-DATE
CALENDAR AND
EQUIPMENT LISTS



HOUSTON, TEXAS



PART 1

TIMED AUCTION

OPENS: WEDNESDAY, AUGUST 10TH AT 12:00 PM
CLOSES: WEDNESDAY, AUGUST 17TH AT 12:00 PM

LARGE QUANTITY OF SUPPORT EQUIPMENT, GENERATORS, WATER PUMPS, WELDERS, TRENCH BOXES, SHORING, ATTACHMENTS AND MORE IN CONJUNCTION WITH PPL AUCTIONS AND PLANT & MACHINERY INC.



PART 2

ONSITE LIVE AUCTION

THURSDAY, AUGUST 18TH AT 9:00 AM
BANKRUPTCY SALE

BURNSIDE SERVICES, INC - VERY LARGE 1 OWNER SALE
PRIMARYLY CAT LATE MODEL CONSTRUCTION, PAVING EQUIPMENT, CASE & IH AGRICULTURAL TRACTORS & IMPLEMENTS, TRUCK TRACTORS, DUMP TRAILERS, ALL TYPES OF SUPPORT TRUCKS

315.633.2944

lyonauction.com

lyonauctionlive.com

lyonmexico.com