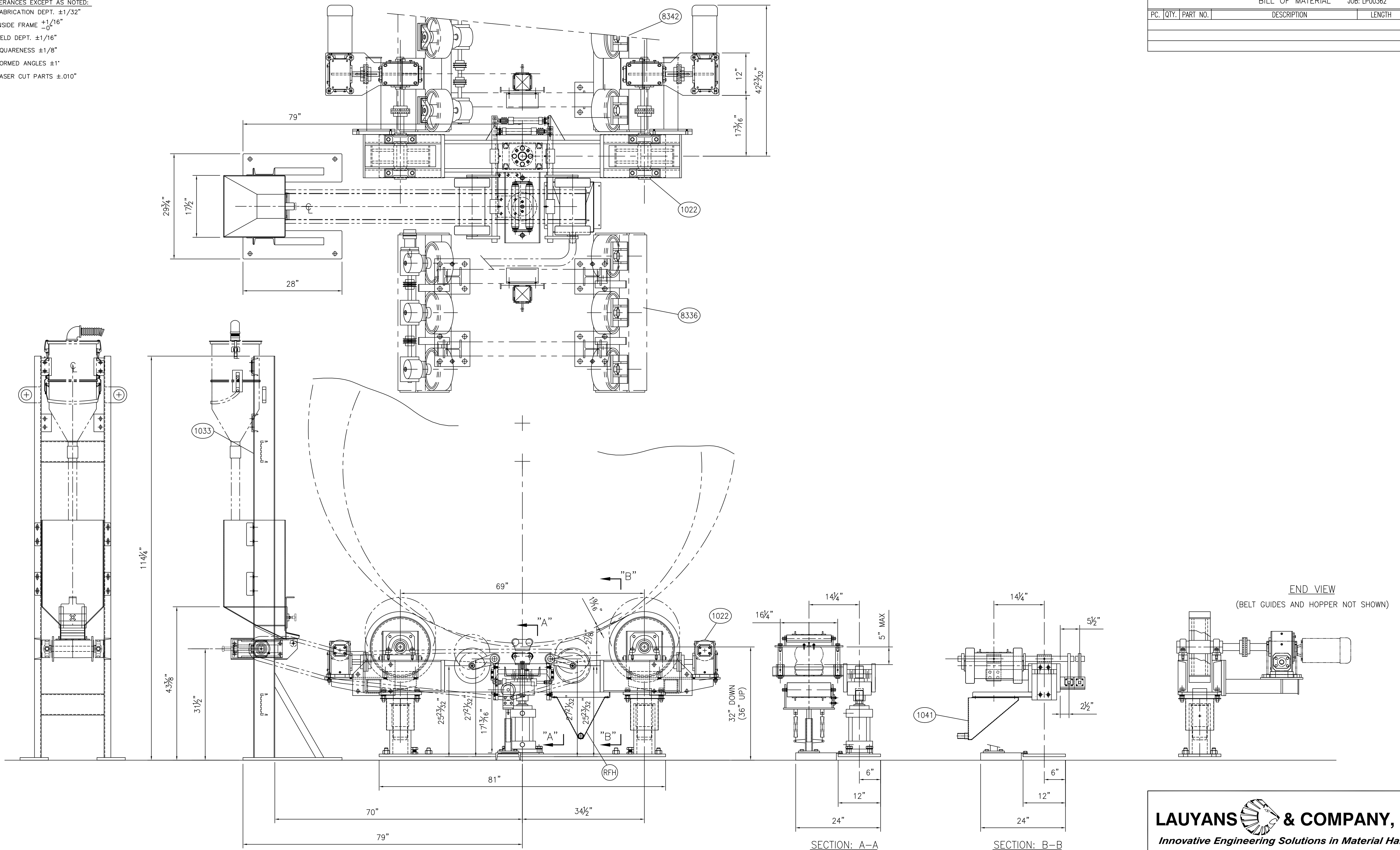


TOLERANCES EXCEPT AS NOTED:

- ① FABRICATION DEPT.  $\pm 1/32"$
- ② INSIDE FRAME  $+1/16"$   
 $-0"$
- ③ WELD DEPT.  $\pm 1/16"$
- ④ SQUARENESS  $\pm 1/8"$
- ⑤ FORMED ANGLES  $\pm 1"$
- ⑥ LASER CUT PARTS  $\pm .010"$

PC.	QTY.	PART NO.	DESCRIPTION	LENGTH	REMARKS



ELEVATION E-E  
FLUX BELT LIFT FROM DWG -GA

**LAUYANS & COMPANY, INC.**  
*Innovative Engineering Solutions in Material Handling*  
 LOUISVILLE KENTUCKY

TITLE FLUX BELT LIFT SYSTEM			
CUST.			
DATE: 5-5-17	CUST. P.O.	SHIP TO:	
DRAWN: BKR	SCALE: 1" = 12" - 0"	DWG. NO. LP00362	CAD FILE:
CHECKED:	JOB NO:	G03	REV.

"THIS DRAWING AND THE INFORMATION HEREIN IS CONFIDENTIAL AND/OR PROPRIETARY TO LAUYANS & COMPANY, INC. NEITHER THIS DRAWING NOR THE INFORMATION CONTAINED HEREIN MAY BE COPIED OR REPRODUCED, OR USED BY OTHERS IN ANY MANNER, WITHOUT THE EXPRESS WRITTEN CONSENT OF LAUYANS & COMPANY, INC. AND THIS DRAWING SHALL BE IMMEDIATELY RETURNED TO LAUYANS & COMPANY, INC. UPON REQUEST. ALL PATENT RIGHTS ARE RESERVED."

REV.	DATE	DESCRIPTION
C		
B		
A		