

# ONLINE AUCTION

## Electrical Utility Device Manufacturer

Location Closed

SMART  WIRES

312 Raleigh Street, Suite 1  
Wilmington, NC 28412

**SALE DATE: Tues. August 13 thru Tues. August 20**

**INSPECTION: Monday, August 19th 9:00am - 4:00pm CDT or by Appointment**

**Pulse Cutting Band Saw • Abrasive Water Jet • Vacuum Pressure Impregnation System  
Core Shear & Winder System • Curing Ovens & Furnaces • Barrel Rotator & Mixers  
Generator, Transformer & Power Equipment • Cranes • Lift Trucks & MORE**



Bid Online Only at

 BidSpotter.com

105 Revere Drive, Suite C • Northbrook, Illinois 60062

Phone: 224.927.5320 • Fax: 224.927.5311

Email: sales@pplauction.com

 **ppl** auction  
www.pplauctions.com

 **GoIndustry  
DoveBid**

Phone: 203-733-7191





**BID ONLINE  
ONLY AT**

**BidSpotter.com**

**Pulse Cutting Band Saw**

Amada 13" x 13" Horizontal Single Pulse Cutting Metal Band Saw Model PCSAW330, S/N 30150171 (2012), 13.5" x 1.5" SMARTCUT Blade, 99 Station NC Backgauge, AC Inverter Speed Change, Auto Initial Material Position, Auto Trim Cut, Blade Deviation Monitor, Chip Conveyor, Full Stroke Vise, Hydraulic Blade Tension, Motion Detector, Quick Approach, Split Front Vise

**Abrasive Water Jet**

Omax Abrasive Water Jet Model Maxiem 0707, S/N M07075018 (2012), 2' 6" x 2' 6" X-Y Cutting Travels, 5' x 3' 1.5" Table, 350"/Minute Max Traverse Speed, 30 HP Omax Variable Speed Solids Removal System \*(NOTE - MACHINE MOVED FOR CONVENIENCE OF REMOVAL) \*





Don't Miss This Auction  
**BID ONLINE  
ONLY AT**

**BidSpotter.com**



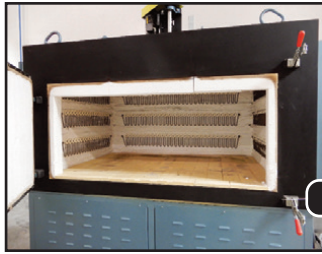
**Vacuum Pressure Impregnation System**

HeatTek Vacuum Pressure Impregnation System, S/N 2556 (2012), Including:  
Buckeye Process Chamber Model 30736, S/N 30736 (2012), 2.5' Diameter x 5' Depth, 100 PSI Maximum Working Pressure, 200 Degrees Fahrenheit Maximum Temperature  
Buckeye Jacketed Storage Chamber, S/N SO 32025 (2012), 2.5' Diameter x 5' Depth, 5 PSI Maximum Working Pressure, 200 Degrees Fahrenheit Maximum Temperature  
Koolant Kooler Chiller Model HAV500P-L-IL, S/N 34642, 1 HP  
Safety Mezzanine Bridge

**Core Shear & Winder System**

MTM DSR Core Winding and Core Forming System, S/N 2122-2012 (2012), Montalvo Open Loop/Diameter Based Tension Controller





### Curing Ovens & Furnaces

**Thermcraft 108" x 70" x 106" Annealing Furnace Model 1-3-80-480-E25ZK-J13871-2EA, S/N 1413871 (2014), 1650 Degrees Fahrenheit Max Temperature, Three Phase, 480 Volts, 100 Amps**

**Thermcraft 108" x 70" x 106" Annealing Furnace Model 1-3-80-480-E16ZK-J12088-2EA, S/N 1212088 (2012), 1650 Degrees Fahrenheit Max Temperature, Three Phase, 480 Volts, 100 Amps**

**Grieve 84" x 106" x 86" Explosion-Proof Electric Curing Oven Model WRC446-500, S/N 106134A0512, 347 Degree Fahrenheit Max Temperature, 60 KW Heat Input, 84 Amps**

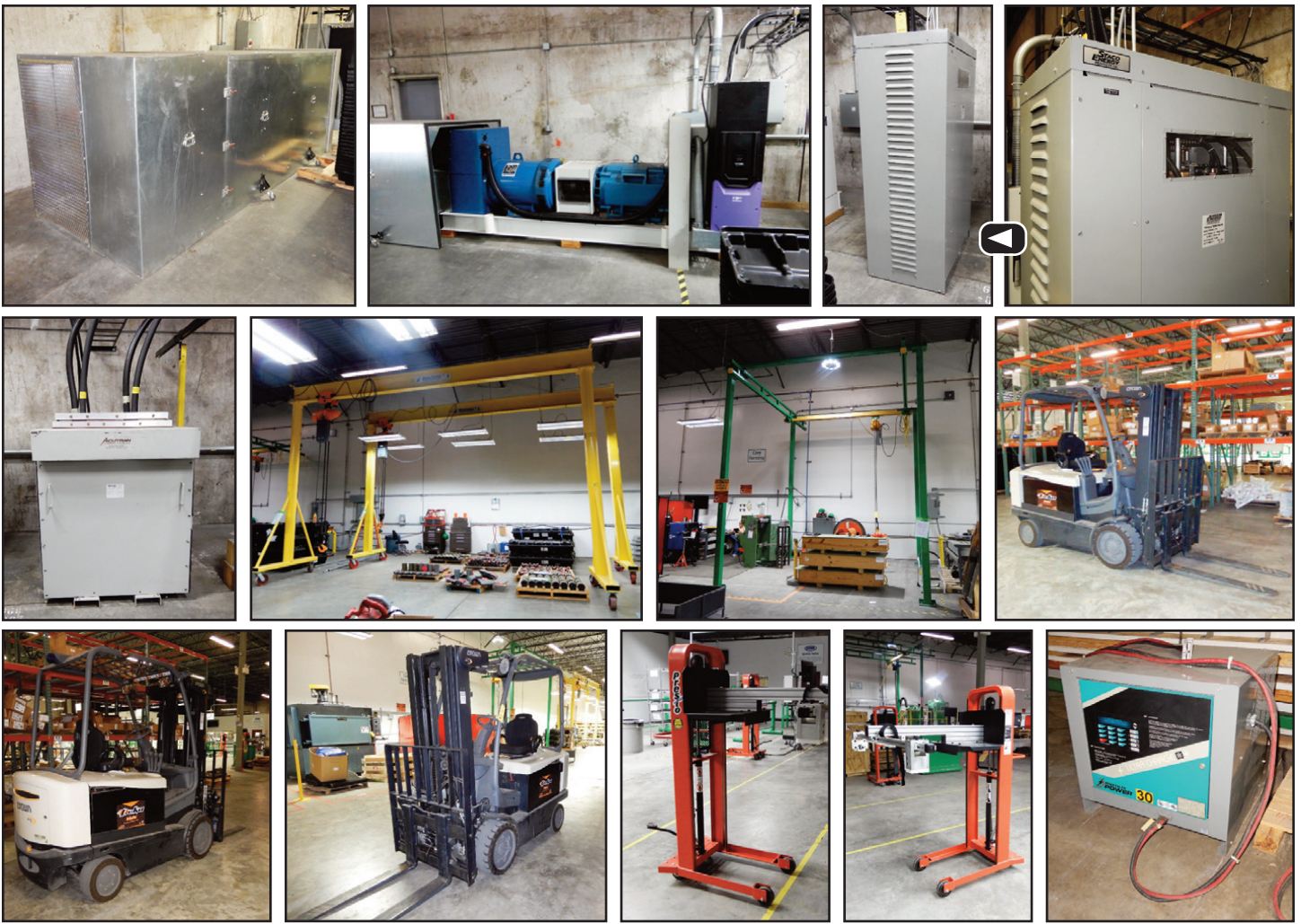
**Grieve 51" x 55" x 80" Electric Drying Oven Model 343, S/N 106433A0612, 400 Degrees Fahrenheit Max Temperature, 66 KW Heat Input, 10 Amps**

### Barrel Rotator & Mixers

**MorseDrum Barrel Rotator, S/N CP-2-5154-1-115, with Safety Cage**

**(2) Fluid Research Mixers Model Elastomer T-200, S/N's 105-0566 (2014) & 105-0678 (2016)**





**Don't Miss This Auction**  
**SALE DATE:**  
**Tuesday, August 13**  
**thru**  
**Tuesday, August 20**

Bid Online Only at  
**BidSpotter.com**

**Generator, Transformer & Power Equipment**

TEMCo Power Conversion Systems Motor Generator Set Model MG-0150-B19A4-IDS, 150 KVA, 3 Phase, 480 Input and Output Voltage, includes Metal Enclosure

Staco Energy Variable Transformer Model 60M602E-18PS, 176.4 KVA, Single Phase, 60 Hertz, 480 Input Voltage, 0-560 Output Voltage, 315 Output Amps

Acutran 120 kVA Dry Type Transformer, S/N 307410101

Socomec 2000 Amp Switch & Inductor

**Cranes**

(2) Dearborn 5-Ton Mobile Overhead Gantry Cranes, 21" Span x 16.33" Height, with 5-Ton Accolift Hoist, Pendant Controls

(2) 17' x 10.5' Gorbell 2,000 lbs. Gantry Crane Systems, each with 2-Ton Hoist

**Lift Trucks**

(2) Prestolifts 1,000 Lbs. Hydraulic Lifts Model M152, S/N's V047915-100/1223577 (2013) & S/N VO52814-1/1247909-1 (2013), 15" Lift Capacity, Platform Attachments

Crown 4,500 Lbs. Electric Forklift Model FC45-45-60, S/N 9A177673, with Fork Positioner

Presolite Power 171 Amp Battery Charger Model Ultra Charge, S/N 207CS51676

See Complete Auction Terms & Conditions On Our Website – [www.pplauctions.com](http://www.pplauctions.com)





### General Equipment

- Clemco Abrasive Blast Machine Model 2452, S/N 51972, 6 CF capacity
- (6) Shop Fox Magnetic Tool Hoists, 440 Lbs. Max Weight per Hoist
- Custom Core Winding Machines, Core Assembly Stations, H Bridge Assembly Stations, and ICC Assembly Stations
- Test Station Cage
- (4) Global Industries 43" Diameter Turntables
- (2) Fireproof Cabinets
- Wright Self-Dumping Hopper
- 6" Sander
- Assorted Power Tools and Hand Tools
- Assorted Fans
- Assorted Metal & Butcherblock Work Benches and Tables

Bid Online Only at  
**BidSpotter.com**

105 Revere Drive, Suite C • Northbrook, Illinois 60062  
 Phone: 224.927.5320 • Fax: 224.927.5311  
 Email: sales@pplauction.com



**www.pplauctions.com**



**Phone: 203-733-7191**

See Complete Auction Terms & Conditions On Our Website – [www.pplauctions.com](http://www.pplauctions.com)